

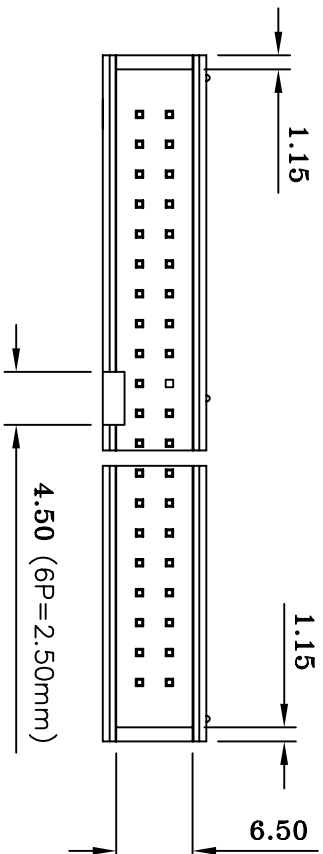
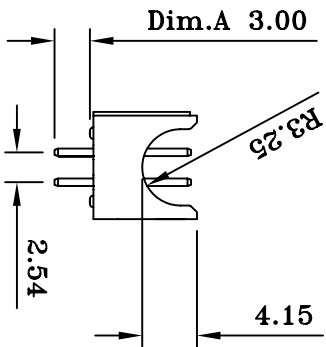
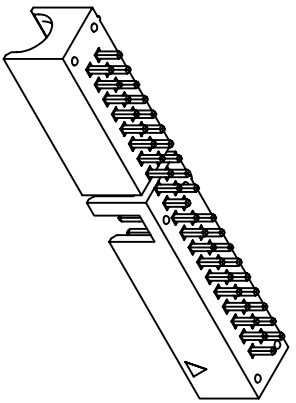
Current Rating: 3 Amps
 Insulator Resistance: 5000 Megohms min
 Contact Resistance: 20m ohms max.
 Dielectric Withstanding: 1000 V AC
 Operating Temperature: -40° ~ +85° C
 Contact Material: Copper Alloy
 Insulator Material: Polyester; UL 94V-0
 Standard: PBT

Finish: Gold Plated or Duplex Plated
 Standard: Gold Flash all over

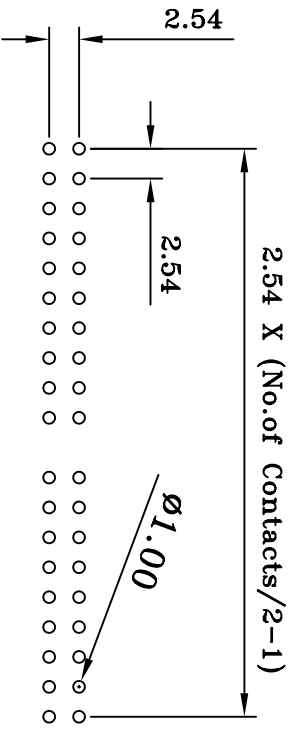
Note:
 Duplex Plating: Gold Plated on contact area,

Insulator Material: Tin on solder area
 Polyester; UL 94V-0
 Standard: Nylon-6T

Max Processing Temp: 230° C for 60 seconds
 Max Processing Temp: 260° C for 10 seconds

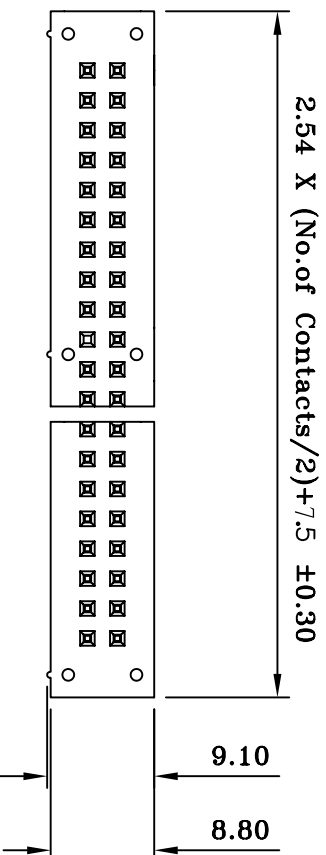
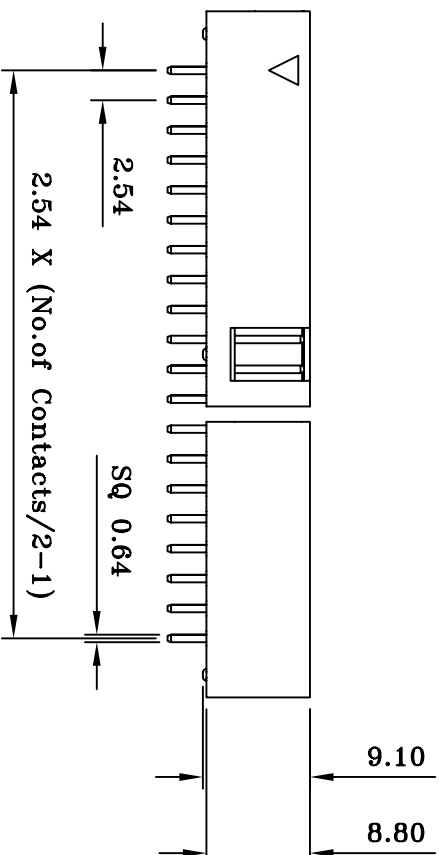


Recommended P.C. Board Hole Layout



(RoHS Compliant) BH1R X X - XX S0 BK X 000 C
 1 2 3 4 5 6 7 8

- Insulator Material:
 - A= P.B.T.
 - N= Nylon-6T
 - 2. A=Phosphor Bronze
 - B= Brass
 - 3. Circuits: 06 ~ 64pin
 - 4. Tail Style: S0= Straight
 - 5. Color: BK=Black
- Contact Plated:
 - T=Matte Tin over Nickel
 - W=Matte Tin over Nickel 150u"
 - Y=Bright Tin over Nickel
 - C=Gold Flash
 - F=Gold Flash,Matte Tin 100u"
 - A=Gold 3u"
 - B=Gold 3u",Matte Tin 100u"
 - D=Gold 5u"
- Gold Plating:
 - E=Gold 5u",Matte Tin 100u"
 - G=Gold 10u"
 - J=Gold 10u",Matte Tin 100u"
 - L=Gold 15u"
 - M=Gold 15u",Matte Tin 100u"
 - U=Gold 30u"
 - V=Gold 30u",Matte Tin 100u"
- Special Options: C=Tray



©:BH1RXX-XXS0BKX000-2007/05/16-C



CONN TOP
 COMPONENT INC.

PART NO

BH1RXX-XXS0BKX000C

X ±0.3

.XX ±0.20

.XXX ±0.100

1: BH1RXX-XXBKHX0

DRAWING NO

BH-00110

EDITION: C1

ITEM: BH

2: QT-0.64X11.60BN

DRAWN BY

GARY

2008/04/02

SCALE: 1:1

3: 0

APPROVAL BY

UNIT: m.m

TEL:(02)86481727 FAX:(02)86482427