

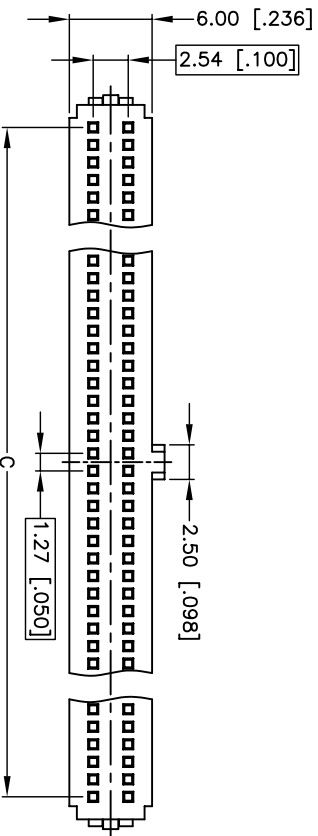
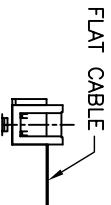
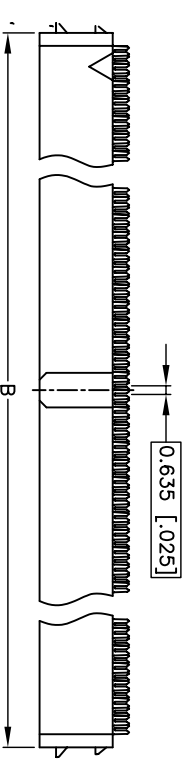
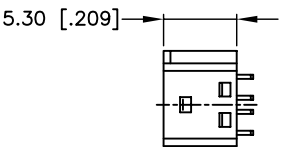
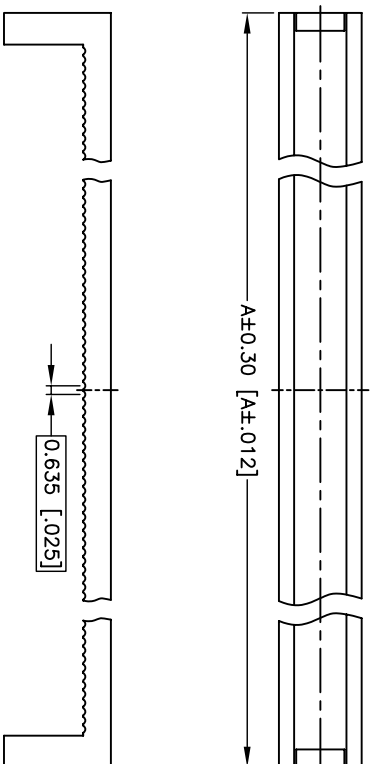
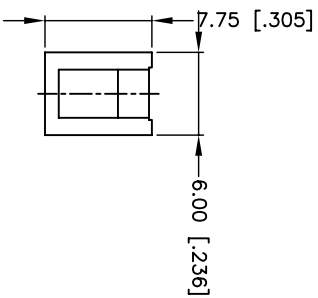
MATERIALS

1. HOUSING : PBT (UL 94V-0) BLACK
2. TERMINAL : COPPER ALLOY
GOLD FLASH PLATING ON CONTACT AREA
UNDER PLATING NICKEL. (t=0.30mm)

SPECIFICATION

1. CURRENT RATING : 1 AMP. MAX.
2. DIELECTRIC WITHSTANDING VOLTAGE :
500V AC R.M.S. FOR ONE MINUTE.
3. INSULATION RESISTANCE : 500M OHMS MIN.
AT 500V DC.
4. CONTACT RESISTANCE : 30m OHMS MAX.
5. OPERATING TEMPERATURE : -40°C TO +105°C.

100	68.40 [2.693]	65.50 [2.579]	62.23 [2.450]
80	55.70 [2.193]	52.80 [2.079]	49.53 [1.950]
68	48.08 [1.893]	45.18 [1.779]	41.91 [1.650]
60	43.00 [1.693]	40.10 [1.579]	36.83 [1.450]
50	36.65 [1.443]	33.75 [1.329]	30.48 [1.200]
44	32.84 [1.293]	29.94 [1.179]	26.67 [1.050]
40	30.30 [1.193]	27.40 [1.079]	24.13 [0.950]
34	26.49 [1.043]	23.59 [0.929]	20.32 [0.800]
30	23.95 [0.943]	21.05 [0.829]	17.78 [0.700]
26	21.41 [0.843]	18.51 [0.729]	15.24 [0.600]
22	18.87 [0.743]	15.97 [0.629]	12.70 [0.500]
20	17.60 [0.693]	14.70 [0.579]	11.43 [0.450]
16	15.06 [0.593]	12.16 [0.479]	8.89 [0.350]
14	13.79 [0.543]	10.89 [0.429]	7.62 [0.300]
10	11.25 [0.443]	8.35 [0.329]	5.08 [0.200]
Number of Position	DIMENSIONS		
	A	B	C



(RoHS Compliant)

FC-41 - XX P0 BK N 000 C
1 2 3 4 5 6

1. Circuits: 06 to 68pin
2. Material:
P0=Phosphor Bronze
3. Color: BK=Black
GR=Gray
4. Contact Plated:
T=Tin over Nickel
C=Gold Flash
F=Gold Flash,Tin 100u"
A=Gold 3u"
B=Gold 3u",Ni 50u"
D=Gold 5u"
E=Gold 5u",Ni 50u"

- G=Gold 10u"
- J=Gold 10u",Ni 50u"
- L=Gold 15u"
- M=Gold 15u",Ni 50u"
- U=Gold 30u"
- V=Gold 30u",Ni 50u"
- N=Gold Flash, Ni
5. Special Dptions
6. Packing: C=Tray



CONN TOP
COMPONENT INC.

PART NO

FC-41-XXP0BK N000C

.X
±0.3

DRAWING NO

FC-00104

ITEM: FC

DRAWN BY

GARY

SCALE: 1:1

BOM 2:

1424

EDITION: C

2008/10/22

UNIT: m.m

3:

APPROVAL BY

TEL:(02)86481727 FAX:(02)86482427