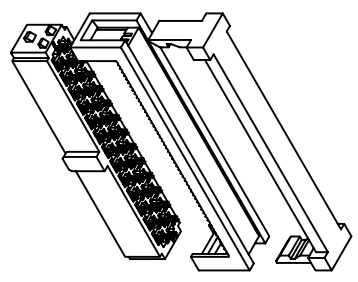


MATERIALS

1. HOUSING : PBT (UL 94V-0) BLACK
2. TERMINAL : COPPER ALLOY
- GOLD FLASH PLATING ON CONTACT AREA UNDER PLATING NICKEL. (t=0.30mm)

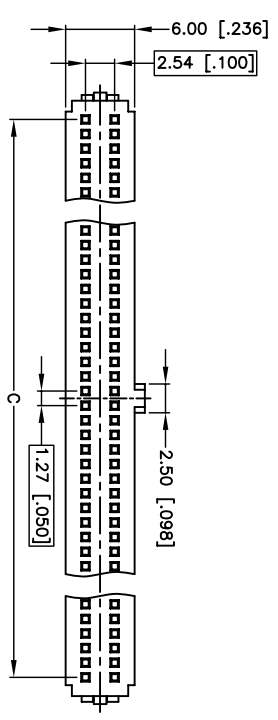
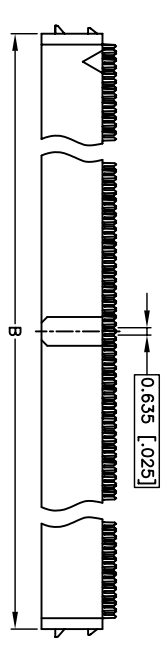
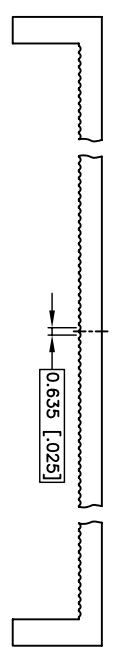
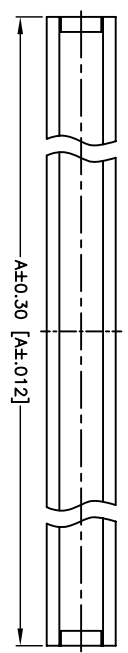
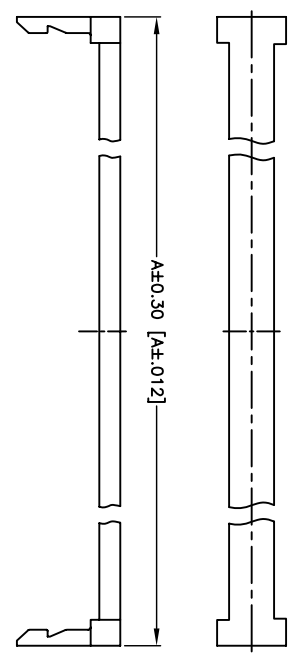
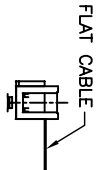
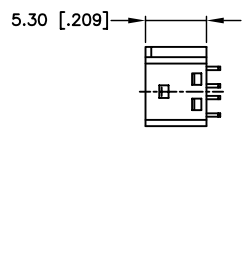
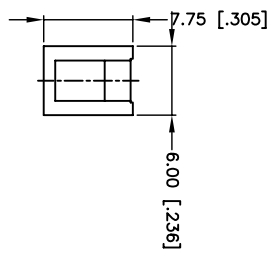
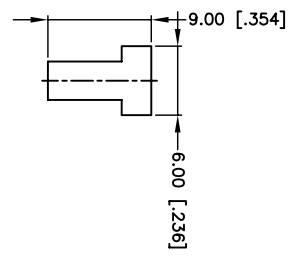
SPECIFICATION

1. CURRENT RATING : 1 AMP. MAX.
2. DIELECTRIC WITHSTANDING VOLTAGE : 500V AC R.M.S. FOR ONE MINUTE.
3. INSULATION RESISTANCE : 500M OHMS MIN. AT 500V DC.
4. CONTACT RESISTANCE : 30m OHMS MAX.
5. OPERATING TEMPERATURE : -40°C TO +85°C.



| | | | |
|--------------------|---------------|---------------|---------------|
| 100 | 68.40 [2.693] | 65.50 [2.579] | 62.23 [2.450] |
| 80 | 55.70 [2.193] | 52.80 [2.079] | 49.53 [1.950] |
| 68 | 48.08 [1.893] | 45.18 [1.779] | 41.91 [1.650] |
| 60 | 43.00 [1.693] | 40.10 [1.579] | 36.83 [1.450] |
| 50 | 36.65 [1.443] | 33.75 [1.329] | 30.48 [1.200] |
| 44 | 32.84 [1.293] | 29.94 [1.179] | 26.67 [1.050] |
| 40 | 30.30 [1.193] | 27.40 [1.079] | 24.13 [0.950] |
| 34 | 26.49 [1.043] | 23.59 [0.929] | 20.32 [0.800] |
| 30 | 23.95 [0.943] | 21.05 [0.829] | 17.78 [0.700] |
| 26 | 21.41 [0.843] | 18.51 [0.729] | 15.24 [0.600] |
| 22 | 18.87 [0.743] | 15.97 [0.629] | 12.70 [0.500] |
| 20 | 17.60 [0.693] | 14.70 [0.579] | 11.43 [0.450] |
| 16 | 15.06 [0.593] | 12.16 [0.479] | 8.89 [0.350] |
| 14 | 13.79 [0.543] | 10.89 [0.429] | 7.62 [0.300] |
| 10 | 11.25 [0.443] | 8.35 [0.329] | 5.08 [0.200] |
| Number of Position | A | B | C |

DIMENSIONS



FC-413 - XX P0 BK N 000
1 2 3 4 5

(RoHS Compliant)

1. Circuits: 06 to 68pin
2. Material:
 - P0=Phosphor Bronze
 - Color: BK=Black GR=Gray
4. Contact Plated:
 - T=Tin over Nickel
 - C=Gold Flash
 - F=Gold Flash, Tin 100u'
 - A=Gold 3u'
 - B=Gold 3u', Ni 50u'
 - D=Gold 5u'
 - E=Gold 5u', Ni 50u'
5. Special Options:
 - G=Gold 10u'
 - J=Gold 10u', Ni 50u'
 - L=Gold 15u'
 - M=Gold 15u', Ni 50u'
 - U=Gold 30u'
 - V=Gold 30u', Ni 50u'
 - N=Gold Flash, Ni



CONN TOP COMPONENT INC.

PART NO FC-413-XXP0BKN000

.X ±0.3 .XX ±0.2 .XXX ±0.1

| | | | | |
|-------------------------------------|------------|-------------|------------|------------|
| 1: | DRAWING NO | FC-00101 | EDITION: C | ITEM: FA |
| 2: | DRAWN BY | GARY | 2008/07/09 | SCALE: 1:1 |
| 3: | 1424 | | | |
| TEL: (02)86481727 FAX: (02)86482427 | | APPROVAL BY | | UNIT: m.m |