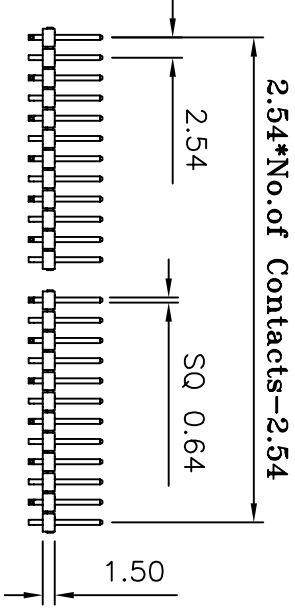
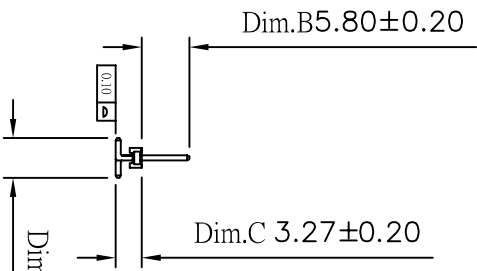
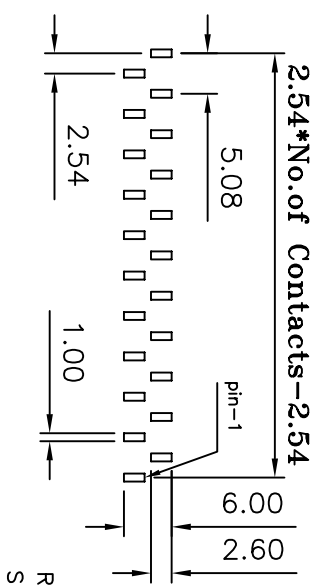
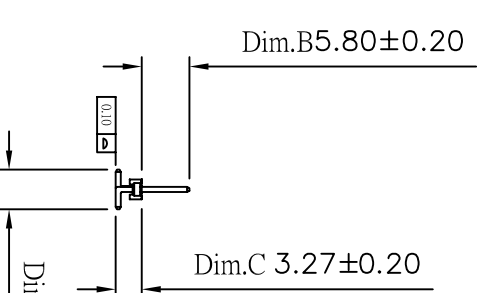


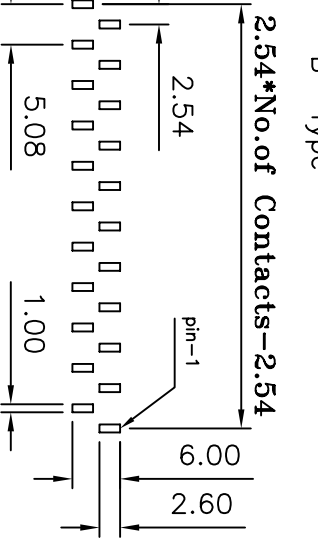
A Type



B Type



Recommended P.C. Board  
SMD Layout



(RoHS Compliant)

- Insulator Material: N = Nylon-6T, P = Phosphor Bronze, Blank=Brass, 3. Per Row: 03 to 40, 4. Tail Style: DA = S.M.D A Type, DB = S.M.D B Type, 5. Color: BK=Black, WH=White
- Contact Plated: T=Matte Tin over Nickel, W=Matte Tin over Nickel 150u", Y=Bright Tin over Nickel, C=Gold Flash, F=Gold Flash, Matte Tin 100u", A=Gold 3u", B=Gold 3u", Matte Tin 100u"
- Special Options: D=Gold 5u", E=Gold 5u", Matte Tin 100u", G=Gold 10u", H=Gold 10u", Matte Tin 100u", J=Gold 10u", Matte Tin 100u", L=Gold 15u", M=Gold 15u", Matte Tin 100u", U=Gold 30u", V=Gold 30u", Matte Tin 100u"
- Packaging: B = Tube, D = Box

HI N 15 X - 1 XX D0 BK X 000 X  
1 2 3 4 5 6 7 8

①:HIN15-1XXXD0BKX000-2007/01/24-C

CONN TOP COMPONENT INC.	
1:	HIN15-1XXXBKH0
2:	QT-0.64X XXXBN
3:	0

PART NO	HIN15X-1XXXD0BKX000X	.X	.XX	.XXX
DRAWING NO	PH-00117	±0.3	±0.20	±0.100
DRAWN BY	GARY	EDITION:	C1	ITEM: PH
APPROVAL BY		2008/05/21	SCALE: 1:1	UNIT: m.m

Current Rating: 3 Amps  
 Insulator Resistance: 5000 Megohms min  
 Contact Resistance: 20 m ohms max  
 Dielectric Withstanding: 1000 V AC  
 Operating Temperature: -40° ~ +105° C  
 Max Processing Temp: 230° C for 60 seconds  
 Max Processing Temp: 260° C for 10 seconds  
 Contact Material: Copper Alloy  
 Insulator Material: Polyester, UL 94V-0  
 Standard: Nylon-6T

Finish: Tin, Gold Plated  
 Standard: Gold Flash all over