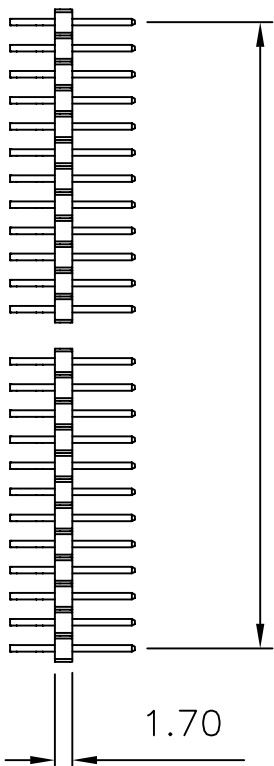


2.54*No.of Contacts/2-2.54



Current Rating:

3 Amps

Insulator Resistance:

5000 Megohms min

Contact Resistance:

20 m ohms max

Dielectric Withstanding:

1000 V AC

Operating Temperature:

-40° ~ +105° C

Max Processing Temp:

230° C for 60 seconds

Max Processing Temp:

260° C for 10 seconds

Contact Material:

Copper Alloy

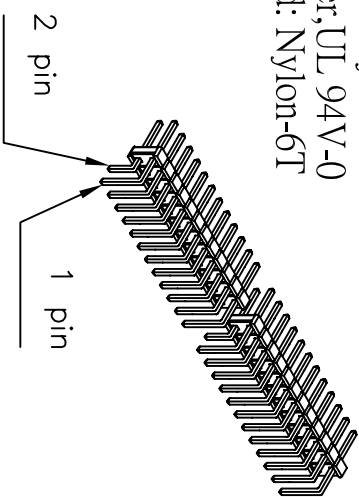
Insulator Material:

Polyester, UL 94V-0

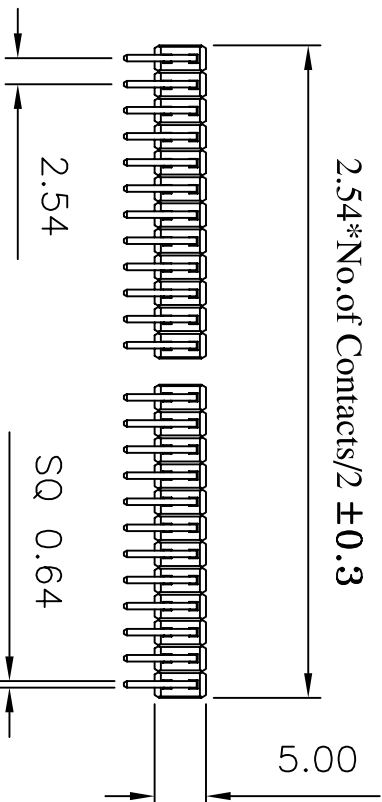
Standard: Nylon-6T

Finish: Tin, Gold Plated

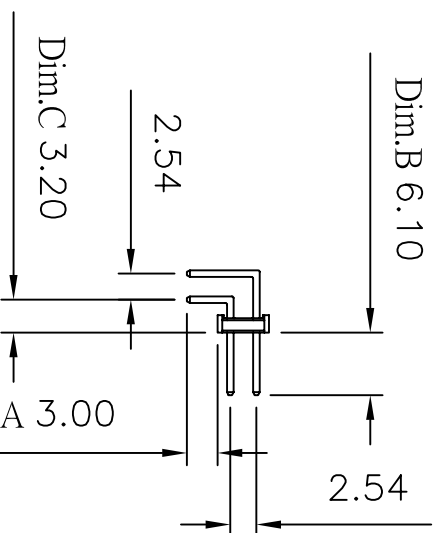
Standard: Gold Flash all over



2.54*No.of Contacts/2 ±0.3

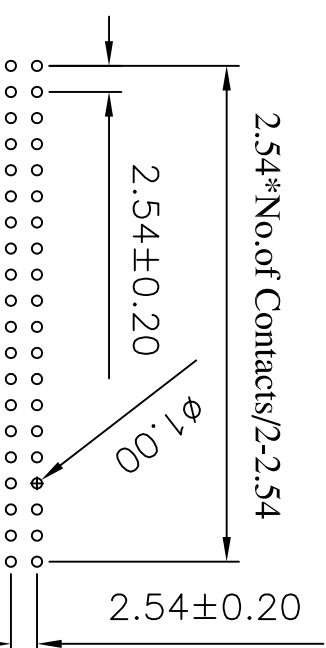


Dim.B 6.10



Recommended P.C. Board

Hole Layout



(RoHS Compliant)

HI N 17 X - 2 XX R0 BK X 000 X
1 2 3 4 5 6 7 8

1. Insulator Material:

N = Nylon-6T

2. P = Phosphor Bronze

Blank=Brass

3. Per Row: 02 to 40

4. Tail Style:

R0 = Right Angle

5. Color: BK=Black

WH=White

6. Contact Plated:

T=Matte Tin over Nickel

W=Matte Tin over Nickel 150u"

Y=Bright Tin over Nickel

C=Gold Flash

F=Gold Flash,Matte Tin 100u"

A=Gold 3u"

B=Gold 3u",Matte Tin 100u"

D=Gold 5u"

E=Gold 5u",Matte Tin 100u"

G=Gold 10u"

J=Gold 10u",Matte Tin 100u"

L=Gold 15u"

M=Gold 15u",Matte Tin 100u"

U=Gold 30u"

V=Gold 30u",Matte Tin 100u"

7. Special Options

8. Packing:

A = PE Bog

D = Box



CONN TOP
COMPONENT INC.

①:HI17-2XXXR0BKX000-2007/01/24-C

PART NO

HI17X-2XXXR0BKX000X

.X
±0.3

.XX
±0.20

.XXX
±0.100

DRAWING NO

PH-00131

EDITION: C1

ITEM: PH

DRAWN BY

GARY

2008/05/27

SCALE: 1:1

APPROVAL BY

UNIT: m.m

1: HI17-2XXXR0BKX000

2: QT-0.64X13.00BN

3: QT-0.64X18.00BN

TEL:(02)86481727 FAX:(02)86482427