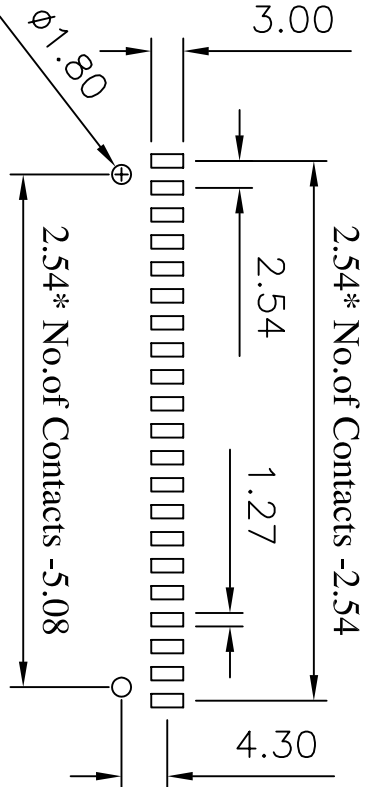
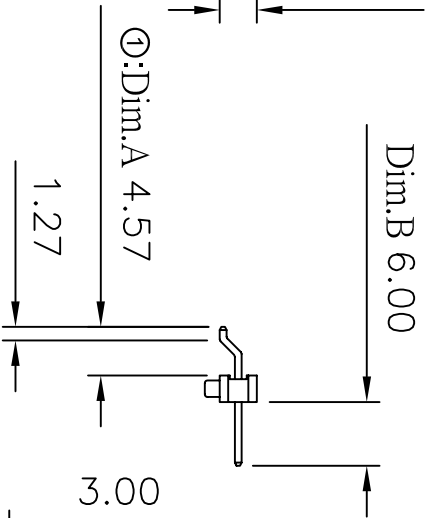
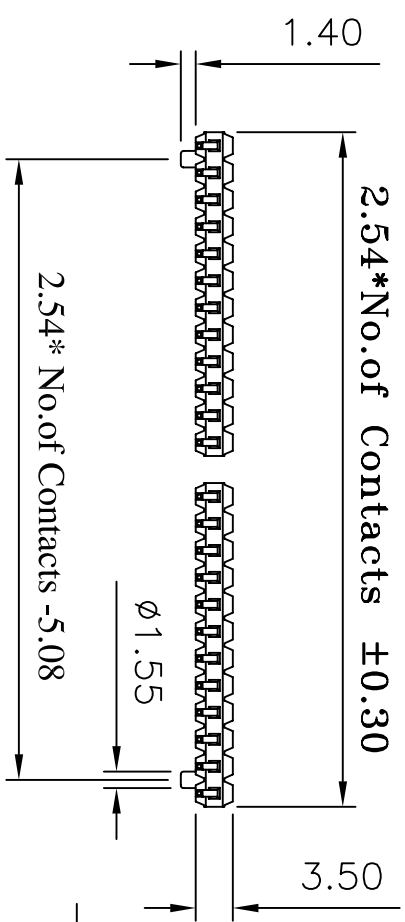
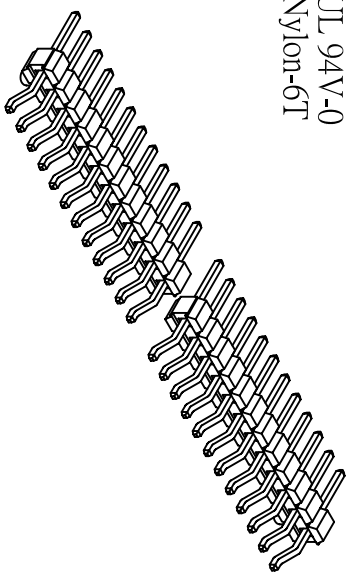


Current Rating: 3 Amps
 Insulator Resistance: 5000 Megohms min
 Contact Resistance: 20 m ohms max.
 Dielectric Withstanding: 1000 V AC
 Operating Temperature: -40° ~ +105° C
 Max Processing Temp: 230° C for 60 seconds
 Max Processing Temp: 260° C for 10 seconds
 Contact Material: Copper Alloy
 Insulator Material: Polyester, UL 94V-0
 Standard: Nylon-6T



Recommended P.C. Board
 Hole Layout

(RoHS Compliant) H1 N 36 X - 1 XX D3 BK X 000 X
 1 2 3 4 5 6 7 8

- Insulator Material:
 N= Nylon-6T
 2. P= Phosphor Bronze
 Blank=Brass
 3. Per Row 02~40 pin
 4. Tail Style:
 D3= S.M.D With Peg Type
 5. Color: BK=Black
- Contact Plated:
 T=Matte Tin over Nickel
 W=Matte Tin over Nickel
 Y=Bright Tin over Nickel
 C=Gold Flash
 F=Gold Flash,Matte Tin 100u"
 A=Gold 3u"
 B=Gold 3u",Matte Tin 100u"
- Special Options
 D=Gold 5u"
 E=Gold 5u",Matte Tin 100u"
 G=Gold 10u"
 J=Gold 10u",Matte Tin 100u"
 L=Gold 15u"
 M=Gold 15u",Matte Tin 100u"
 U=Gold 30u"
 V=Gold 30u",Matte Tin 100u"
- Packaging:
 A= Bag
 D= Box

CONN TOP COMPONENT INC. TEL:(02)86481727 FAX:(02)86482427		PRT NO H1N36X-1XXD3BKX000X DRAWING NO PH-004/75 DRAWN BY GARY APPROVAL BY		.X ±0.3 .XX ±0.20 .XXX ±0.100
1: H1N36-1XXBKH3-D	2: QT-0.64X13.60BN	3: 0	EDITION: C1 SCALE: 1:1 ITEM: PH UNT: m.m	