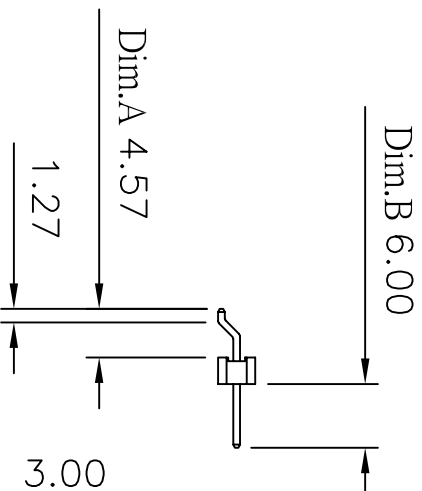
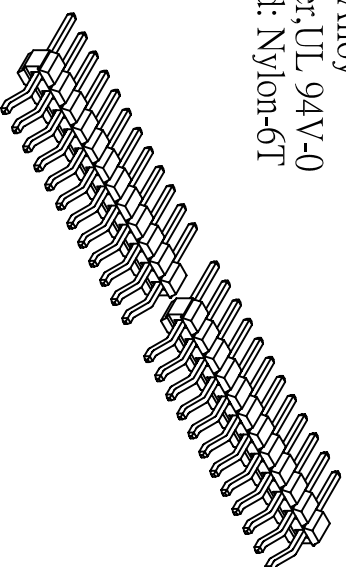
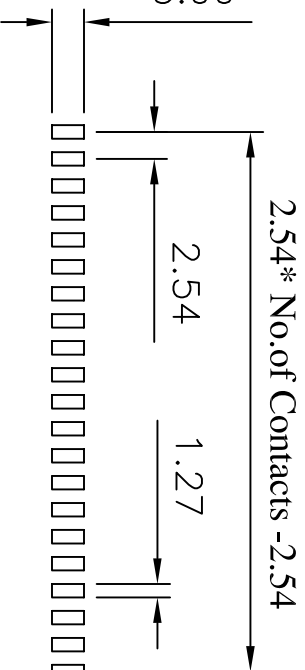


Current Rating: 3 Amps
 Insulator Resistance: 5000 Megohms min
 Contact Resistance: 20 m ohms max.
 Dielectric Withstanding: 1000 V AC
 Operating Temperature: -40° ~ +105° C
 Max Processing Temp: 230° C for 60 seconds
 Max Processing Temp: 260° C for 10 seconds
 Contact Material: Copper Alloy
 Insulator Material: Polyester, UL 94V-0
 Standard: Nylon-6T



Recommended P.C. Board Hole Layout



(RoHS Compliant)

H1 N 36 X - 1 XX SD BK X 000 X
 1 2 3 4 5 6 7 8

- Insulator Material:
N= Nylon-6T
2. P = Phosphor Bronze
Blank=Brass
3. Per Row 02~40 pin
4. Tail Style:
SD = R/A SMD
5. Color: BK=Black

- Contact Plated:
T=Matte Tin over Nickel
W=Matte Tin over Nickel 150u"
Y=Bright Tin over Nickel
C=Gold Flash
F=Gold Flash,Matte Tin 100u"
A=Gold 3u"
B=Gold 3u",Matte Tin 100u"
- D=Gold 5u"
E=Gold 5u",Matte Tin 100u"
G=Gold 10u"
J=Gold 10u",Matte Tin 100u"
L=Gold 15u"
M=Gold 15u",Matte Tin 100u"
U=Gold 30u"
V=Gold 30u",Matte Tin 100u"

- Special Options
8. Packing:
A = Bag
D = Box



CONN TOP
COMPONENT INC.

PART NO

H1N36X-1XXXSDBKX000X

.X
±0.3

.XX
±0.20

.XXX
±0.100

1: H1N36-1XXXBKH3-D

DRAWING NO

PH-00491

EDITION: C

ITEM: PH

2: QT-0.64X13.70BN

DRAWN BY

GARY

2009/08/26

SCALE: 1:1

3: 0

TEL:(02)86481727 FAX:(02)86482427

APPROVAL BY

UNIT: m.m