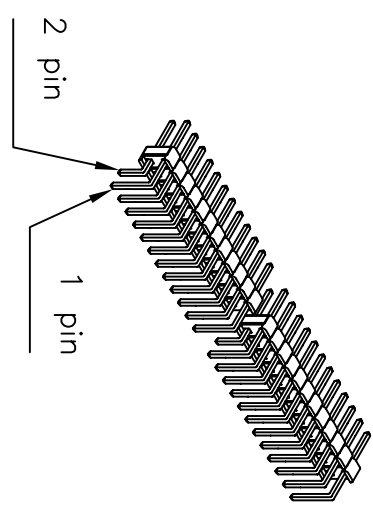
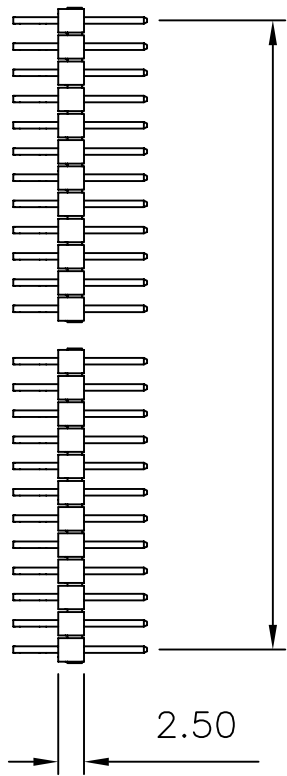
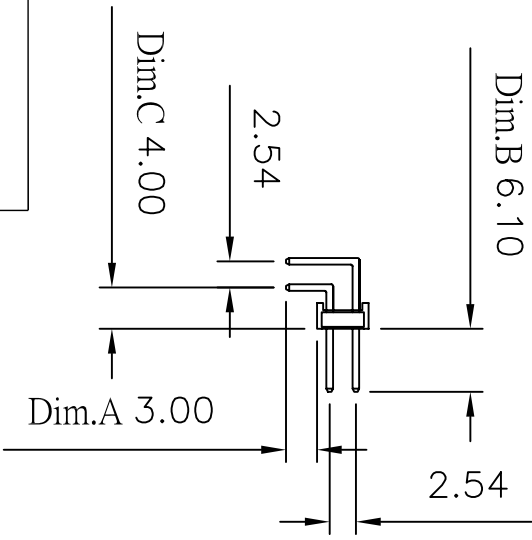
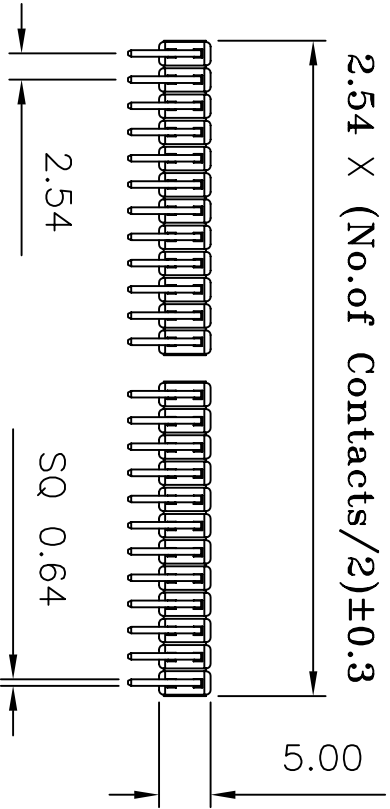


2.54 X (No.of Contacts/2-1)



2.54 X (No.of Contacts/2)±0.3



(RoHS Compliant)

H1 X 25 X - 2 XX R0 BK X 000 X

1. Insulator Material:

A= P,B,T  
N= Nylon-6T  
P= Phosphor Bronze  
Blank=Brass

2. Per Row 02~40 pin

3. Tail Style:

4. Right Angle

5. Color: BK=Black  
WH=White

6. Contact Plated:

T=Matte Tin over Nickel  
W=Matte Tin over Nickel 150u"  
Y=Bright Tin over Nickel

G=Gold Flash  
F=Gold Flash,Matte Tin 100u"  
A=Gold 3u"

B=Gold 3u",Matte Tin 100u"

D=Gold 5u"  
E=Gold 5u",Matte Tin 100u"  
G=Gold 10u"  
J=Gold 10u",Matte Tin 100u"

L=Gold 15u"  
M=Gold 15u",Matte Tin 100u"  
U=Gold 30u"  
V=Gold 30u",Matte Tin 100u"

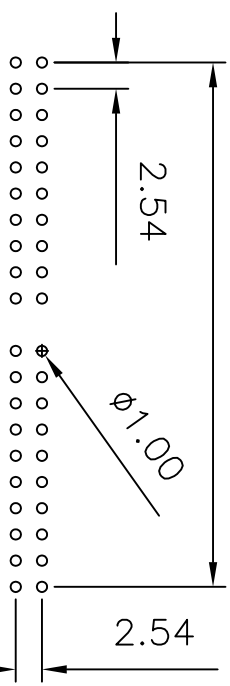
7. Special Options

8. Packing:

A= PE Bog  
D= Box

Dim.C 4.00

2.54\*(No.of Contacts/2-1)



Recommended P.C. Board  
Hole Layout

Current Rating: 3 Amps  
Insulator Resistance: 5000 Megohms min  
Contact Resistance: 20 m ohms max  
Dielectric Withstanding: 1000 V AC  
Operating Temperature: -40° ~ +105° C  
Contact Material: Copper Alloy  
Insulator Material: Polyester,UL 94V-0  
Standard: PBT

Finish: Gold Plated or Duplex Plated  
Standard: Gold Flash all over

Note:  
Duplex Plating: Gold Plated on contact area,  
Tin on solder area

Insulator Material: Polyester,UL 94V-0  
Standard: Nylon-6T

Max Processing Temp: 230° C for 60 seconds  
Max Processing Temp: 260° C for 10 seconds



CONN TOP  
COMPONENT INC.

©:HX25-2XXR0BKX000-2007/01/19-C

1:	H1X25-2XXBKHX0
2:	QT-0.64X13.80BN
3:	QT-0.64X18.80BN

PART NO	H1X25X-2XXR0BKX000X	X	.XX	.XXX
DRAWING NO	PH-00013	±0.3	±0.20	±0.100
DRAWN BY	GARY	EDITION: C1	SCALE: 1:1	ITEM: PH
APPROVAL BY				UNIT: m.m

TEL:(02)86481727 FAX:(02)86482427