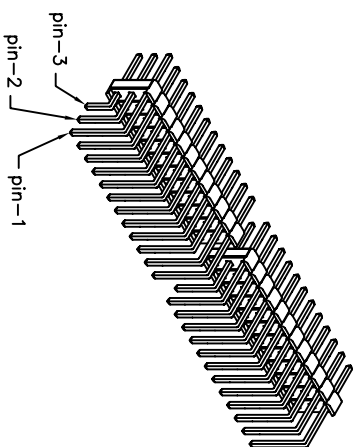
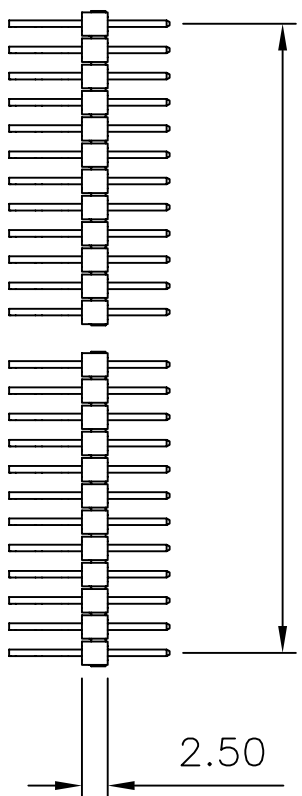
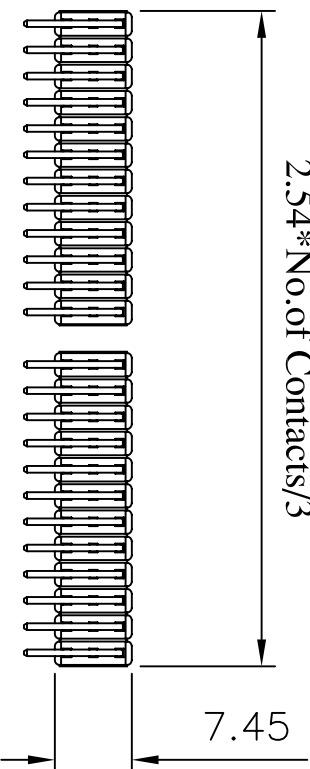


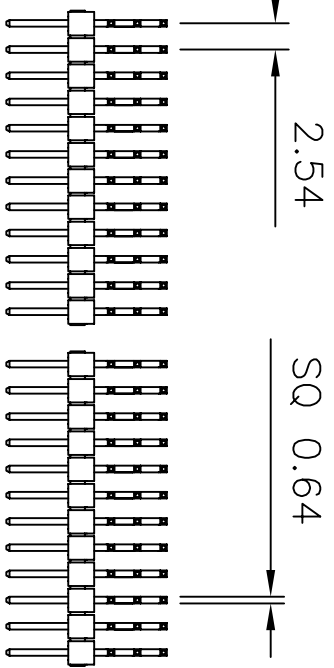
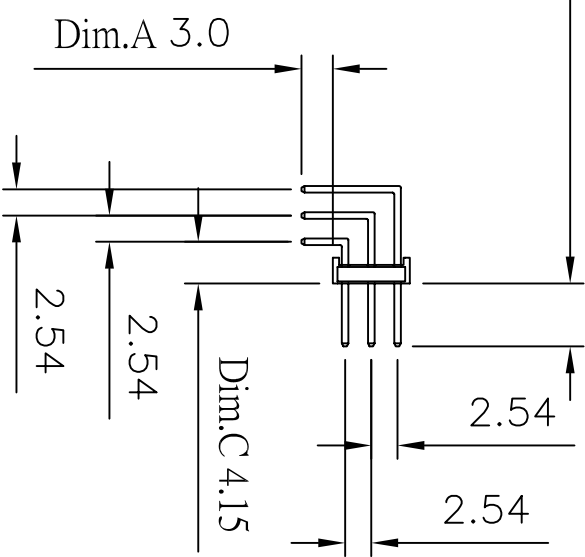
2.54*No.of Contacts/3-2.54



2.54*No.of Contacts/3



Dim.B 6.10



Current Rating: 3 Amps
 Insulator Resistance: 5000 Megohms min
 Contact Resistance: 20 m ohms max
 Dielectric Withstanding: 1000 V AC
 Operating Temperature: -40 ~ +105° C
 Contact Material: Copper Alloy
 Insulator Material: Polyester, UL 94V-0 Standard: PBT

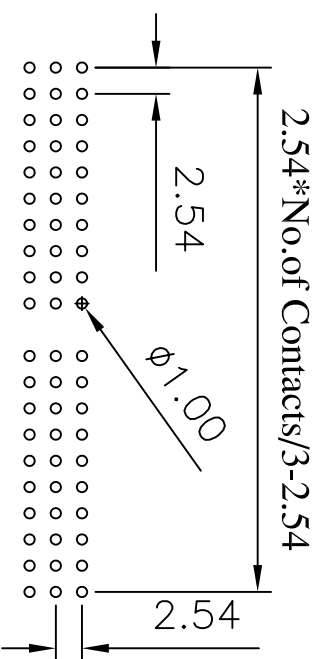
Finish: Gold Plated or Duplex Plated
 Standard: Gold Flash all over

Note:
 Duplex Plating: Gold Plated on contact area,
 Tin on solder area

Insulator Material: Polyester, UL 94V-0
 Standard: Nylon-6T

Max Processing Temp: 230° C for 60 seconds
 Max Processing Temp: 260° C for 10 seconds

Recommended P.C. Board
 Hole Layout



(RoHS Compliant)

1. Insulator Material: H1 X 25 X - 3 XX R0 BK X 000 X
 A= P,B,T
 N= Nylon-6T
 P= Phosphor Bronze
 Blank=Brass
 2. Per Row 02~40 pin
 3. Tail Style:
 RO= Right Angle
 4. Color: BK=Black
 WH=White

6. Contact Plated:

T=Matte Tin over Nickel
 W=Matte Tin over Nickel 150u"
 Y=Bright Tin over Nickel
 G=Gold 5u",Matte Tin 100u"
 E=Gold 5u",Matte Tin 100u"
 G=Gold 10u"
 J=Gold 10u",Matte Tin 100u"
 L=Gold 15u"
 M=Gold 15u",Matte Tin 100u"
 U=Gold 30u"
 V=Gold 30u",Matte Tin 100u"

7. Special Options

8. Packing:
 A= PE Bog
 D= Box



CONN TOP
 COMPONENT INC.

©:H1X25-3XXXRBKX000-2007/01/23-C

1:	H1X25-3XXXBKH0
BOM 2:	QT-0.64X13.80BN
3:	QT-0.64X18.80BN
4:	QT-0.64X23.80BN

PART NO	H1X25X-3XXXR0BKX000X	X	.XX	.XXX
DRAWING NO	PH-00015	±0.3	±0.20	±0.100
DRAWN BY	GARY	EDITION: C1	SCALE: 1:1	ITEM: PH
APPROVAL BY				UNIT: m.m

TEL:(02)86481727 FAX:(02)86482427