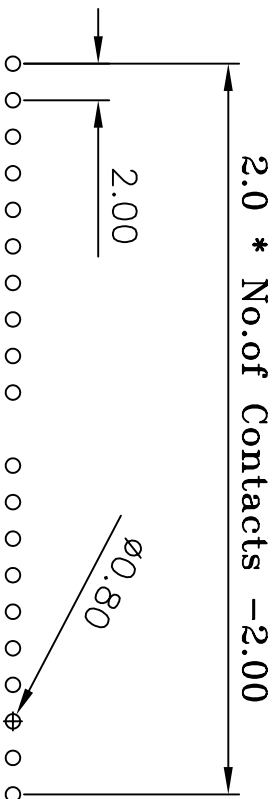
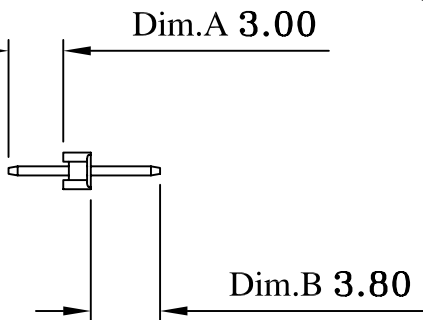
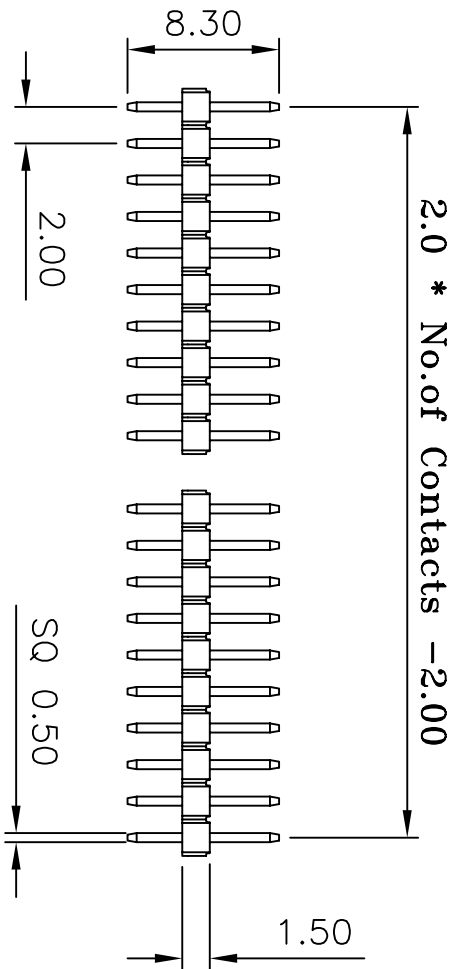


Current Rating: 2 Amps
 Insulator Resistance: 5000 Megohms min
 Contact Resistance: 20 m ohms max
 Dielectric Withstanding: 500 V AC
 Operating Temperature: -40° ~ +105° C
 Max Processing Temp: 230° C for 60 seconds
 Max Processing Temp: 260° C for 10 seconds
 Contact Material: Copper Alloy
 Insulator Material: Polyester, UL 94V-0
 Standard: Nylon-6T

Finish: Tin, Gold Plated
 Standard: Gold Flash all over



Recommended P.C. Board
 Hole Layout

(RoHS Compliant)

H2 N 15 X - 1 XX S0 BK X 000 X
 1 2 3 4 5 6 7 8

- Insulator Material:
 N = Nylon-6T
 P = Phosphor Bronze
 Blank = Brass
 3. Per Row 02~40 pin
 4. Tail Style:
 SO = Straight
 5. Color: BK=Black
 WH=White
- Contact Plated:
 T=Matte Tin over Nickel
 W=Matte Tin over Nickel 150u"
 Y=Bright Tin over Nickel
 C=Gold Flash
 F=Gold Flash,Matte Tin 100u"
 A=Gold 3u"
 B=Gold 3u",Matte Tin 100u"
- Special Options:
 D=Gold 5u"
 E=Gold 5u",Matte Tin 100u"
 G=Gold 10u"
 J=Gold 10u",Matte Tin 100u"
 L=Gold 15u"
 M=Gold 15u",Matte Tin 100u"
 U=Gold 30u"
 V=Gold 30u",Matte Tin 100u"
- Packing:
 A = PE Bag
 D = Box



CONN TOP
 COMPONENT INC.

①:H2X15-1XXXS0BKX000X-2008/05/14-4C1
 ②:H2X15-1XXXS0BKX000-2007/01/25-C

1:	H2N15-1XXXBKXH0
2:	QT-0.50X 8.30BN
3:	0

PART NO	H2N15X-1XXXS0BKX000X	.X	.XX	.XXX
DRAWING NO	PHA-00061	±0.3	±0.20	±0.100
DRAWN BY	GARY			
EDITION:	C2			
APPROVAL BY				
	2008/07/04			
SCALE:	1:1			
ITEM:	PHA			
UNIT:	m.m			

TEL: (02)86481727 FAX: (02)86482427