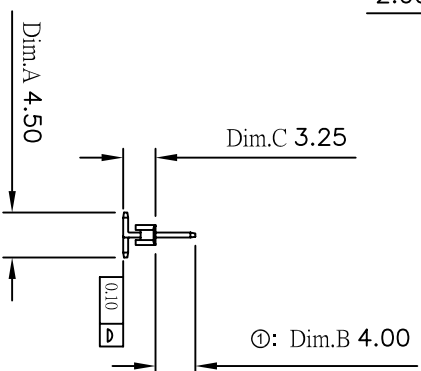
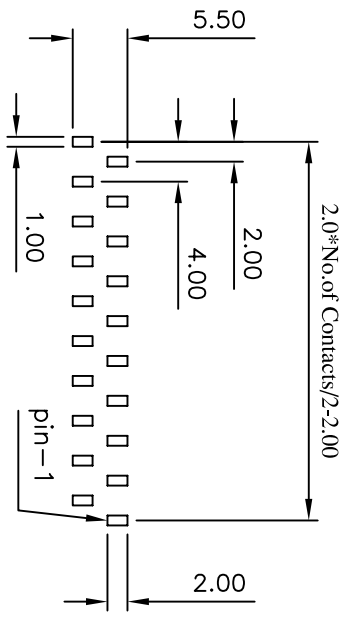
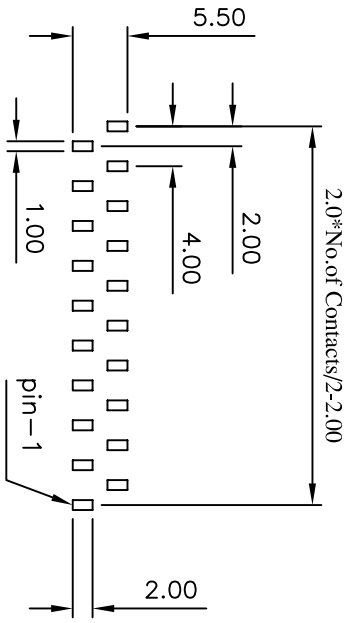
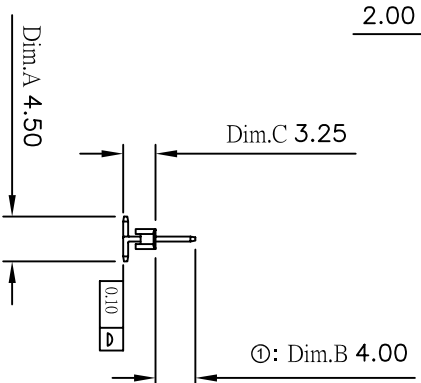
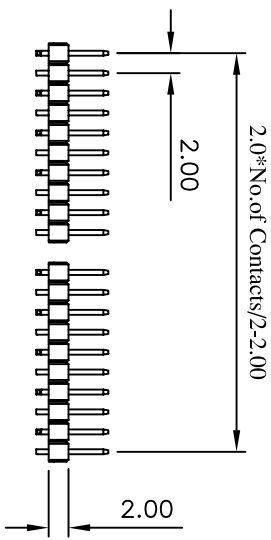


A TYPE
Recommended P.C. Board
SMD Layout



B TYPE
Recommended P.C. Board
SMD Layout



(RoHS Compliant) H2 N 20 X - 1 XX D0 BK X 000 X

- Insulator Material:
 - N = Nylon-6T
 - P = Phosphor Bronze
 - Blank = Brass
- Contact Plated:
 - T = Matte Tin over Nickel
 - W = Matte Tin over Nickel 150u"
 - Y = Bright Tin over Nickel
 - C = Gold Flash
 - F = Gold Flash, Matte Tin 100u"
 - DB = S.M.D B Type
 - Color: BK = Black, WH = White
- Special Options:
 - D = Gold 5u"
 - E = Gold 5u", Matte Tin 100u"
 - G = Gold 10u"
 - J = Gold 10u", Matte Tin 100u"
 - L = Gold 15u"
 - M = Gold 15u", Matte Tin 100u"
 - U = Gold 30u"
 - V = Gold 30u", Matte Tin 100u"
- Packaging:
 - B = Tube
 - D = Box

①: Dim.B 3.80-2007/02/05-C
②: H2N20-1XXDXBKX000-2007/03/29-C1

CONN TOP COMPONENT INC.	
1: H2N20-1XXDKH0	
2: QT-0.50X9.00BN	
3: 0	

PART NO	H2N20X-1XXD0BKX000X	.X	.XXX
DRAWING NO	PHA-00012	±0.3	±0.100
DRAWN BY	GARY	EDITION: C2	ITEM: PHA
APPROVAL BY		2008/07/01	SCALE: 1:1
			UNIT: m.m

Current Rating: 2 Amps
 Insulator Resistance: 5000 Megohms min
 Contact Resistance: 20 m ohms max
 Dielectric Withstanding: 500 V AC
 Operating Temperature: -40° ~ +105° C
 Max Processing Temp: 230° C for 60 seconds
 Max Processing Temp: 260° C for 10 seconds
 Contact Material: Copper Alloy
 Insulator Material: Polyester, UL 94V-0
 Standard: Nylon-6T

Finish: Tin, Gold Plated
 Standard: Gold Flash all over