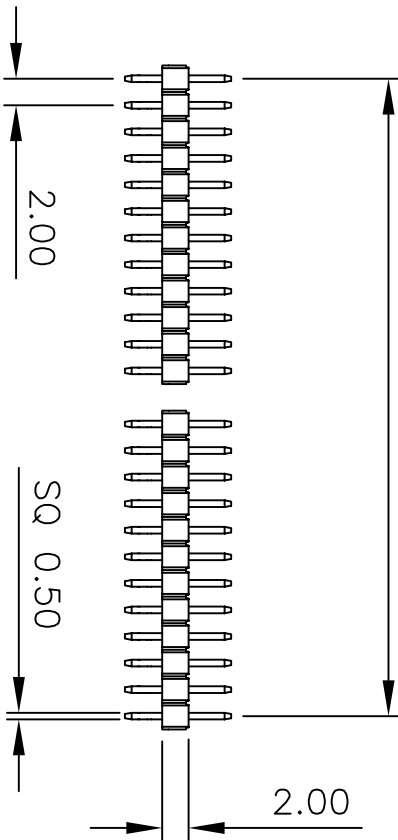
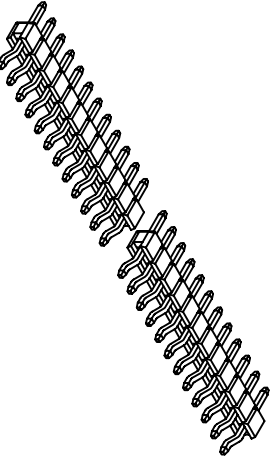


2.0 * No.of Contacts/2 -2.00

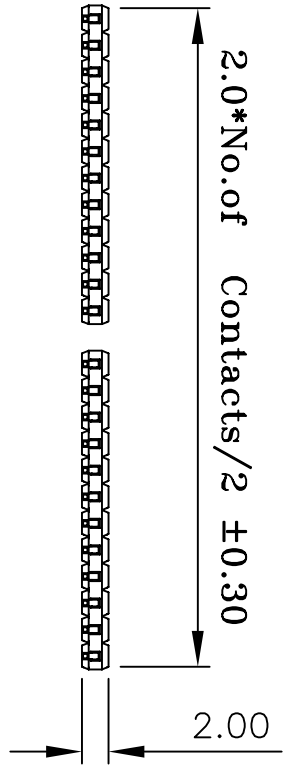


Current Rating: 2 Amps
 Insulator Resistance: 5000 Megohms min
 Contact Resistance: 20 m ohms max
 Dielectric Withstanding: 500 V AC
 Operating Temperature: -40° ~ +105° C
 Max Processing Temp: 230° C for 60 seconds
 Max Processing Temp: 260° C for 10 seconds
 Contact Material: Copper Alloy
 Insulator Material: Polyester, UL 94V-0
 Standard: Nylon-6T

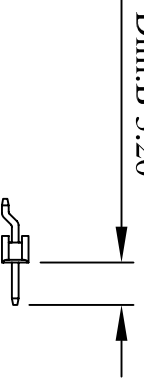
Finish: Tin, Gold Plated
 Standard: Gold Flash all over



2.0*No.of Contacts/2 ±0.30

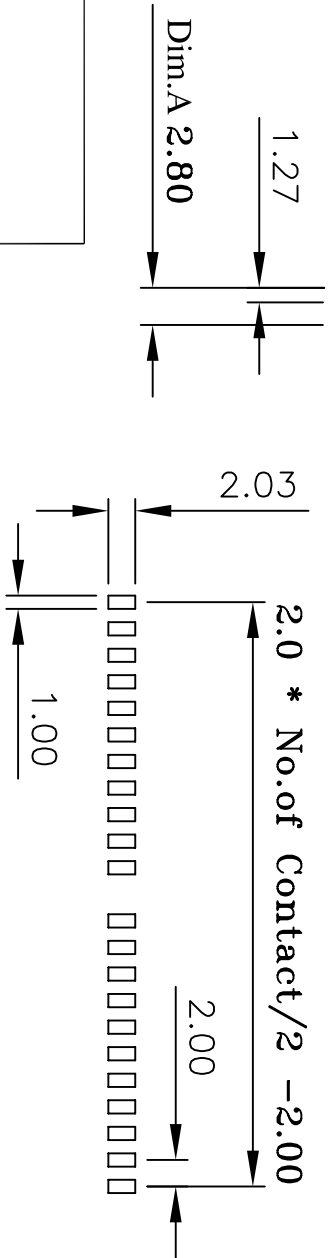


Dim.B 3.20



Recommended P.C. Board
 SMD Layout

Dim.A 2.80



(RoHS Compliant) H2 N 20 X - 1 XX SD BK X 000 X

- | | | |
|---|--|--|
| 1. Insulator Material:
N= Nylon-6T
P= Phosphor Bronze
Blank= Brass | 6. Contact Plated:
T=Matte Tin over Nickel
W=Matte Tin over Nickel
Y=Bright Tin over Nickel | D=Gold 5u"
E=Gold 5u",Matte Tin 100u"
G=Gold 10u"
J=Gold 10u",Matte Tin 100u" |
| 2. Per Row 02~40 pin | C=Gold Flash
F=Gold Flash,Matte Tin 100u"
A=Gold 3u" | L=Gold 15u"
M=Gold 15u",Matte Tin 100u"
U=Gold 30u" |
| 3. Tail Style:
SD= R/A SMD
5. Color: BK=Black
WH=White | B=Gold 3u",Matte Tin 100u" | V=Gold 30u",Matte Tin 100u" |

7. Special Options

8. Packing:
B= Tube
D= Box



CONN TOP
 COMPONENT INC.

①:H2N20-1XXSDBKX000-2007/02/05-C

1:	H2N20-1XXBKH0
2:	QT-0.50X8.20BN
3:	0

PART NO	H2N20X-1XXSDBKX000X	.X	.XX	.XXX
DRAWING NO	PHA-00074	±0.3	±0.20	±0.100
DRAWN BY	GARY	EDITION: C1	SCALE: 1:1	ITEM: PHA
APPROVAL BY		2008/07/03		UNIT: m.m

TEL:(02)86481727 FAX:(02)86482427