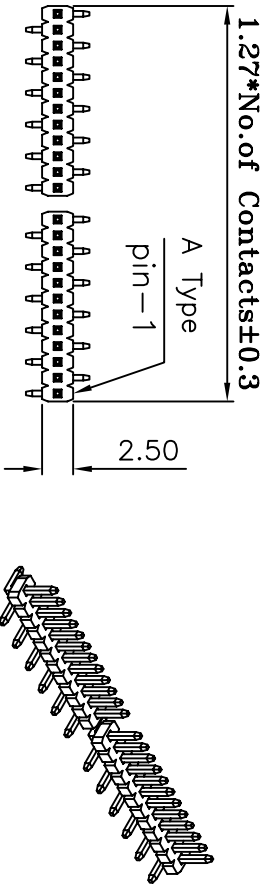
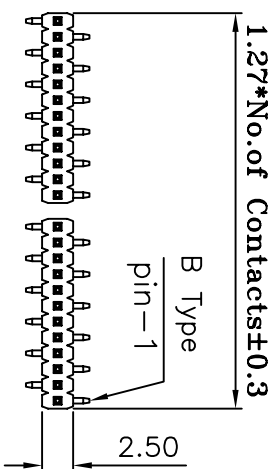


A Type

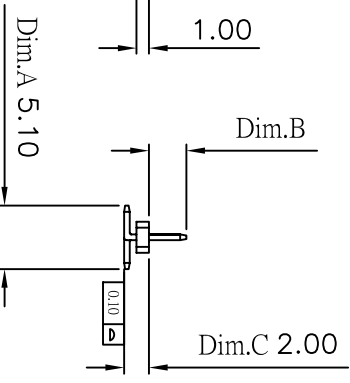


B Type

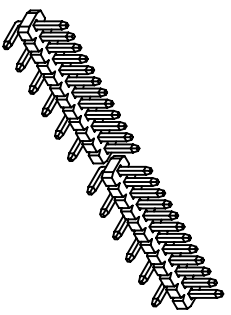
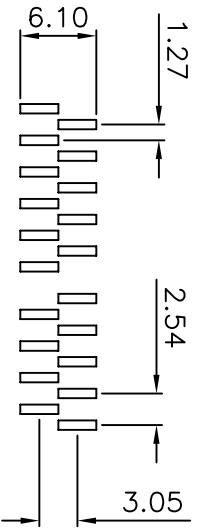
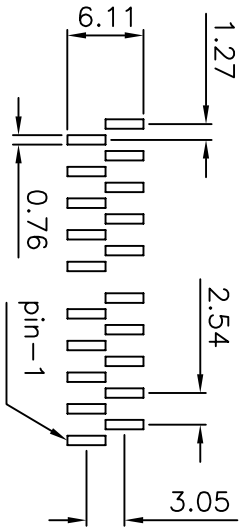
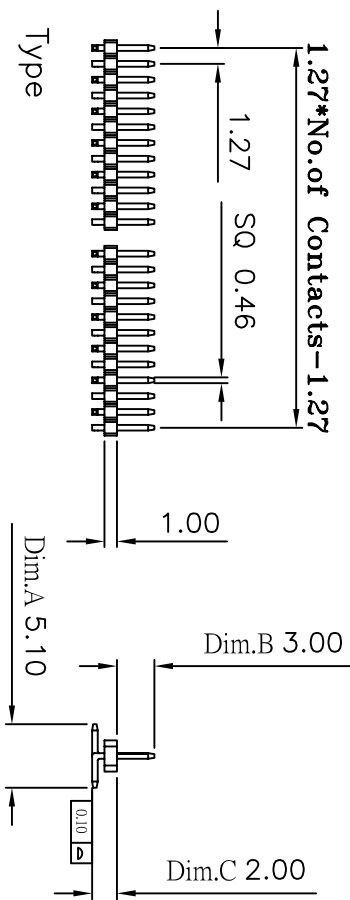


Current Rating: 1 Amps
 Insulator Resistance: 5000 Megohms min
 Contact Resistance: 20 m ohms max
 Dielectric Withstanding: 500 V AC
 Operating Temperature: -40° ~ +105° C
 Max Processing Temp: 230° C for 60 seconds
 Max Processing Temp: 260° C for 10 seconds
 Contact Material: Phosphor Bronze
 Insulator Material: Polyester, UL 94V-0
 Finish: Tin, Gold Plated
 Standard: Nylon-6T
 Standard: Gold Flash all over

A Type
 Recommended P.C. Board
 SMD Layout



B Type
 Recommended P.C. Board
 SMD Layout



(RoHS Compliant) H3 N 10 A X - 1 XX DX BK X 000 B
 1 2 3 4 5 6 7 8

- Insulator Material:
 N= Nylon-6T
- P= Phosphor Bronze
 Blank=Brass
- Per Row 03~50 pin
- Tail Style:
 DA= S.M.D A Type
 DB= S.M.D B Type
- Color: BK=Black
 WH=White
- Contact Plated:
 C=Gold Flash
 A=Gold 3u"
 D=Gold 5u"
 G=Gold 10u"
 L=Gold 15u"
 U=Gold 30u"
- Special Options
 B= Tube
- Packing:

Part No.	Dim.A ±0.20	Dim.B ±0.20	Dim.C ±0.20
H3N10AX-1XXDXBKX001B	5.10mm	3.00mm	2.00mm
H3N10AX-1XXDXBKX002B	5.10mm	1.80mm	2.00mm

①:H3N10A-1XXDXBKX000-2007/06/20-C1		PART NO		H3N10AX-1XXDXBKX000B	X	.XX	.XXX
②:H2N10-1XXBKH0-2007/05/03-C		CONN TOP COMPONENT INC.		DRAWING NO	PHB-00056	EDITION: C2	ITEM: PHB
BOM 1: H3N10A-1XXBKH0		DRAWN BY		GARY	2009/01/21	SCALE: 1:1	UNIT: m.m
BOM 2: QT-0.46X XXBN		APPROVAL BY					
BOM 3: 0		TEL:(02)86481727 FAX:(02)86482427					