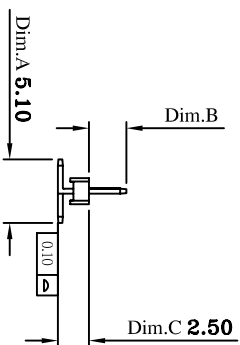
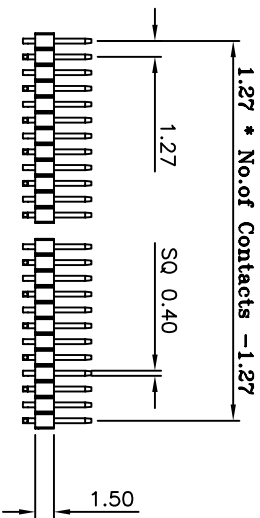
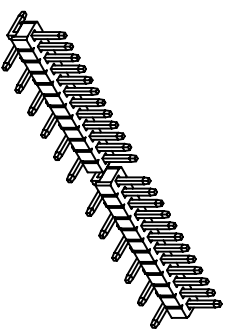
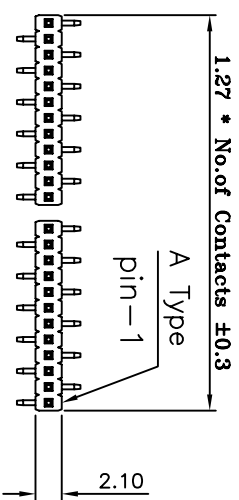
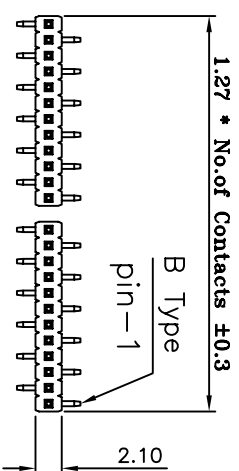


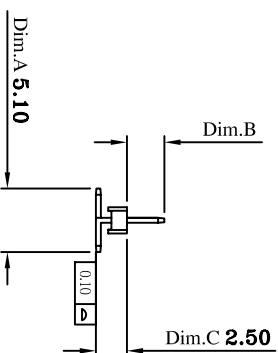
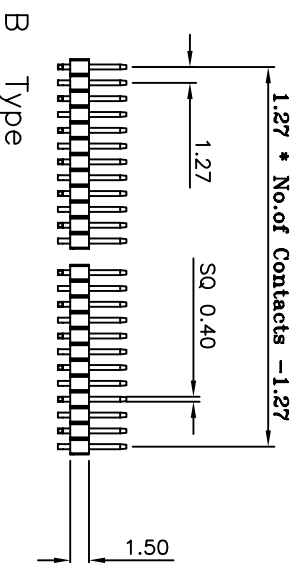
# A Type



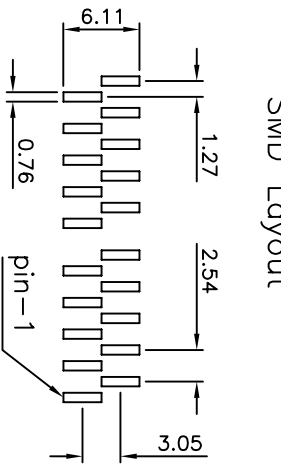
# B Type



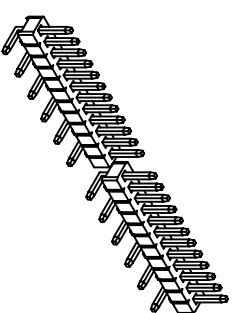
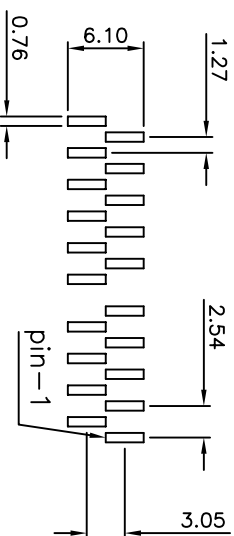
Current Rating: 1 Amps  
 Insulator Resistance: 5000 Megohms min  
 Contact Resistance: 20 m ohms max  
 Dielectric Withstanding: 500 V AC  
 Operating Temperature: -40° ~ +105° C  
 Max Processing Temp: 230° C for 60 seconds  
 Max Processing Temp: 260° C for 10 seconds  
 Contact Material: Phosphor Bronze  
 Insulator Material: Polyester, UL 94V-0  
 Finish: Tin, Gold Plated  
 Standard: Gold Flash all over  
 Standard: Nylon-6T



A Type  
 Recommended P.C. Board  
 SMD Layout



B Type  
 Recommended P.C. Board  
 SMD Layout



(RoHS Compliant) H3 N 15 X - 1 XX DX BK X 000 B  
 1 2 3 4 5 6 7 8

- Insulator Material:  
N= Nylon-6T
- P= Phosphor Bronze  
Blank=Brass
- Per Row 03~50 pin

- Tail Style:  
DA= S.M.D A Type  
DB= S.M.D B Type
- Color: BK=Black  
WH=White

- Contact Plated:  
C=Gold Flash  
A=Gold 3u"  
D=Gold 5u"  
G=Gold 10u"  
L=Gold 15u"  
U=Gold 30u"

- Special Options  
B= Tube

Part No.	Dim.A ±0.20	Dim.B ±0.20	Dim.C ±0.20
H3N15X-1XXDXBKX001B	5.10mm	3.00mm	2.50mm
H3N15X-1XXDXBKX002B	5.10mm	1.80mm	2.50mm

CONN TOP COMPONENT INC.  
 H3N15-1XXDXBKX000B-2007/02/27-C

PART NO	H3N15X-1XXDXBKX000B	.X ±0.3	.XX ±0.20	.XXX ±0.100
DRAWING NO	PHB-00063	EDITION: C1	ITEM: PHB	
DRAWN BY	GARY	2008/08/08	SCALE: 1:1	
APPROVAL BY			UNIT: m.m	

BOM 1: H3N15-1XXDXBKX000B  
 2: QT-0.40X XXBN  
 3: 0  
 TEL:(02)86481727 FAX:(02)86482427