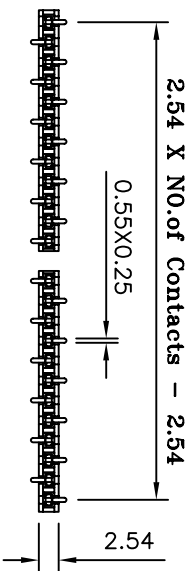
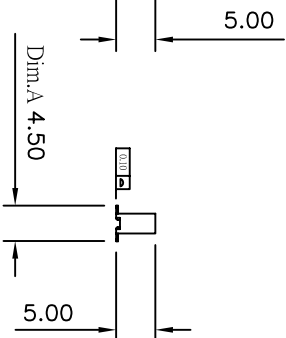
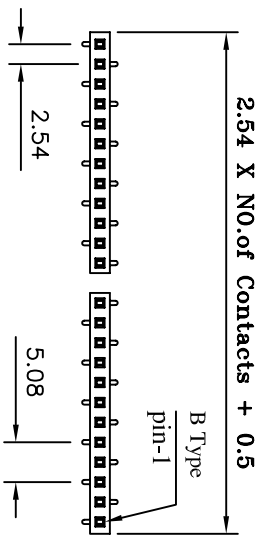


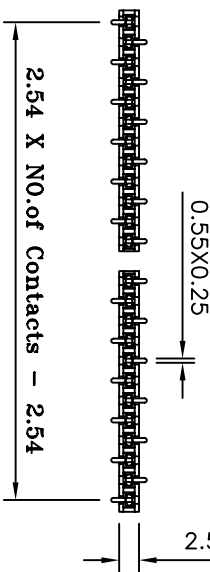
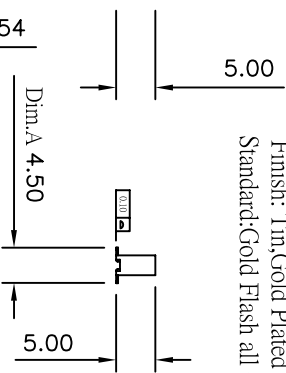
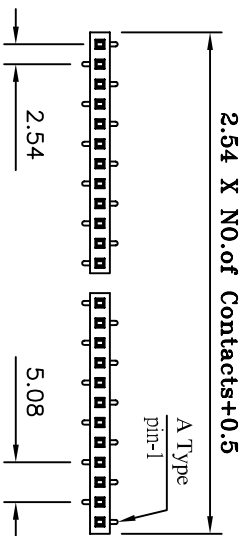
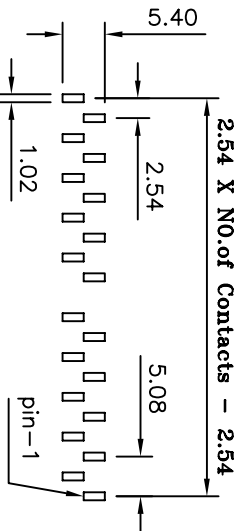
A TYPE

B TYPE



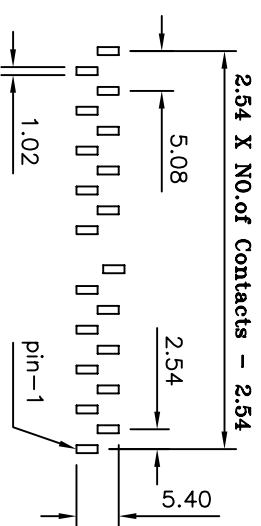
A TYPE

Recommended P.C. Board
SMD Layout



B TYPE

Recommended P.C. Board
SMD Layout



(RoHS Compliant)

P1 N 50 - 1 XX DX BK X 000 B
1 2 3 4 5 6 7

- Standard :
 - N= Nylon-6T
 - Per ROW : 03 to 40
 - Taill Style :
 - DA= S.M.D A Type
 - DB= S.M.D B Type
 - Color : BK=Black
- Contact Plated:
 - T=Matte Tin over Nickel
 - W=Matte Tin over Nickel 150u"
 - Y=Bright Tin over Nickel
 - C=Gold Flash
 - F=Gold Flush,Matte Tin 100u"
 - A=Gold 3u"
 - B=Gold 3u",Matte Tin 100u"
- Special Options
 - D=Gold 5u"
 - E=Gold 5u",Matte Tin 100u"
 - G=Gold 10u"
 - J=Gold 10u",Matte Tin 100u"
 - L=Gold 15u"
 - M=Gold 15u",Matte Tin 100u"
 - U=Gold 30u"
 - V=Gold 30u",Matte Tin 100u"
- Packing
 - B= Tube

Current Rating: 3 Amps

Insulator Resistance: 5000 Megohms min

Contact Resistance: 20 m ohms max

Dielectric Withstanding: 1000 V AC

Operating Temperature: -40° ~ +105° C

Max Processing Temp: 230° C for 60 seconds

260° C for 10 seconds

Phosphor Bronze

Insulator Material: Polyester,UL 94V-0

Standard:Nylon-6T

Finish: Tin,Gold Plated
Standard:Gold Flash all over



CONN TOP
COMPONENT INC.

①:P1N50-1XXXDXBKX000-2007/1/13-C

1: P1N50-1XXXBKHX0-H
2: P1N50-2537-01D
3: 0

TEL:(02)86481727 FAX:(02)86482427

PART NO

P1N50-1XXXDXBKX000B

X .XX .XXX
#0.3 #0.20 #0.100

DRAWING NO

PB-00183

EDITION: C1

DRAWN BY

GARY

2009/01/22

APPROVAL BY

SCALE: 1:1

UNIT: m.m