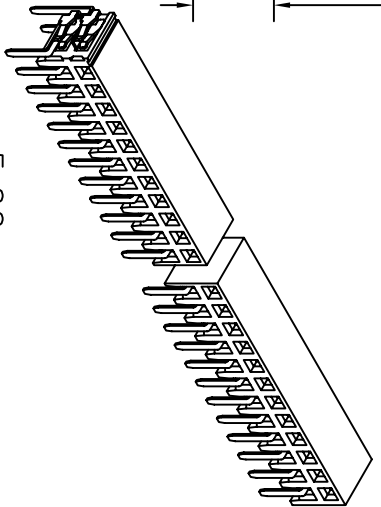
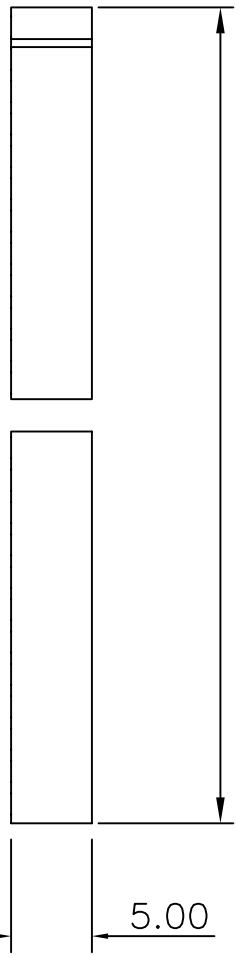
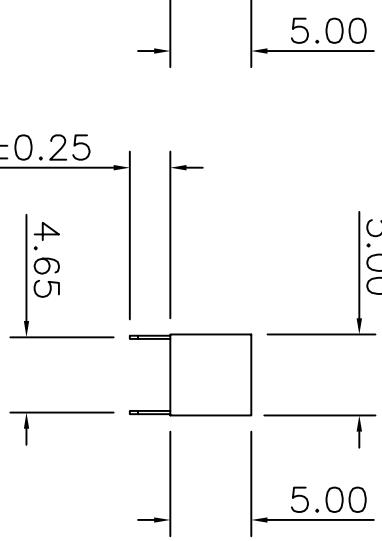
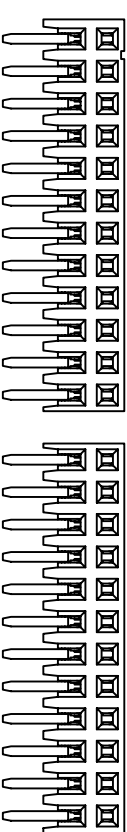


**2.0 X No.of contacts/2 + 0.40**



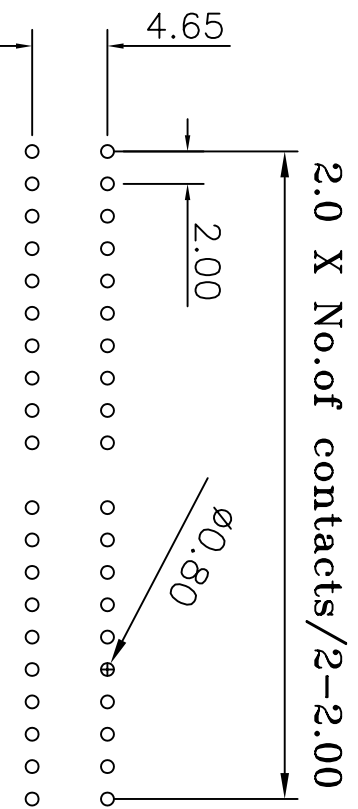
Current Rating: 2 Amps  
 Insulator Resistance: 5000 Megohms min  
 Contact Resistance: 20 m ohms max  
 Dielectric Withstanding: 500 V AC  
 Operating Temperature: -40° ~ +105° C  
 Max Processing Temp: 230° C for 60 seconds  
 260° C for 10 seconds  
 Contact Material: Phosphor Bronze  
 Insulator Material: Polyester; UL 94V-0  
 Standard: Nylon-6T  
 Finish: Tin, Gold Plated  
 Standard: Gold Flash all over



Recommended P.C. Board  
 Hole Layout

**2.0 X No.of contacts/2-2.00**

Dim.A 2.50±0.25



(RoHS Compliant) P2 N 42- 2 XX R0 BK X 000 B  
 1 2 3 4 5 6 7

- Standard: Nylon-6T
- Per ROW 02 to 40
- Tail Style: R0=Right Angle
- Color: BK=Black
- Contact Plated: T=Matte Tin over Nickel, W=Matte Tin over Nickel 150u", Y=Bright Tin over Nickel, C=Gold Flash, F=Gold Flash, Matte Tin 100u", A=Gold 3u", B=Gold 3u", Matte Tin 100u"
- Special Options: D=Gold 5u", E=Gold 5u", Matte Tin 100u", G=Gold 10u", H=Gold 10u", Matte Tin 100u", J=Gold 10u", Matte Tin 100u", L=Gold 15u", M=Gold 15u", Matte Tin 100u", U=Gold 30u", V=Gold 30u", Matte Tin 100u"
- Packings: B= Tube



CONN TOP  
 COMPONENT INC.

|                                     |                    |             |            |
|-------------------------------------|--------------------|-------------|------------|
| ①: P2N42-2XXR0BKX000-2007/08/03-C   |                    |             |            |
| PART NO                             | P2N42-2XXR0BKX000B | .X          | .XXX       |
| DRAWING NO                          | P200-00074         | ±0.3        | ±0.100     |
| DRAWN BY                            | GARY               | EDITION: C1 | ITEM: P200 |
| APPROVAL BY                         |                    | 2009/02/20  | SCALE: 1:1 |
| TEL: (02)86481727 FAX: (02)86482427 |                    | UNIT: m.m   |            |