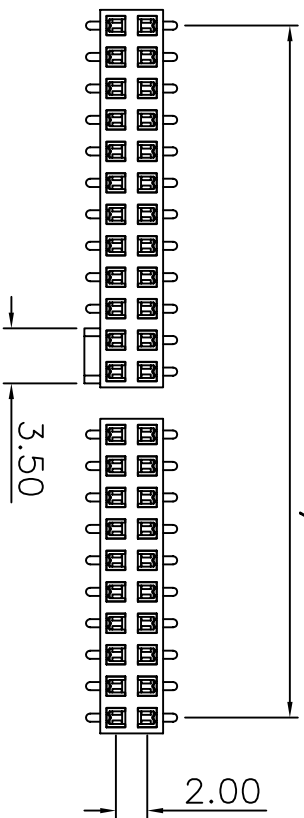
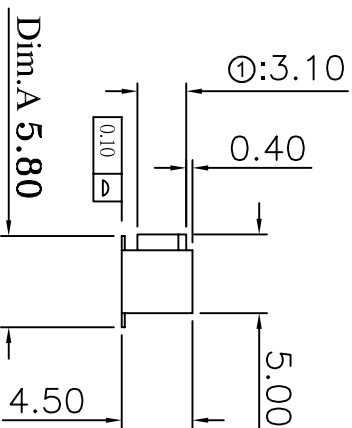
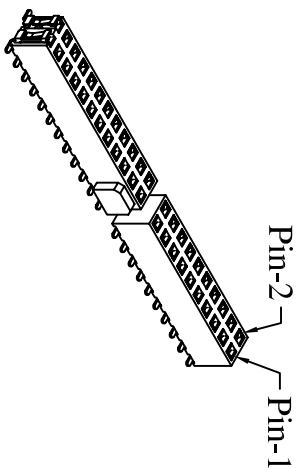
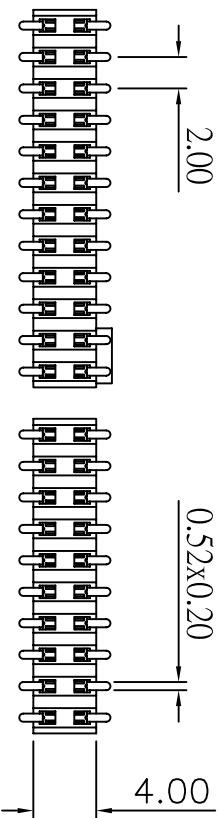
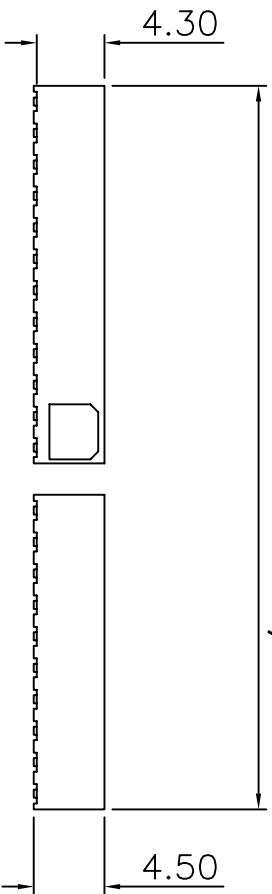


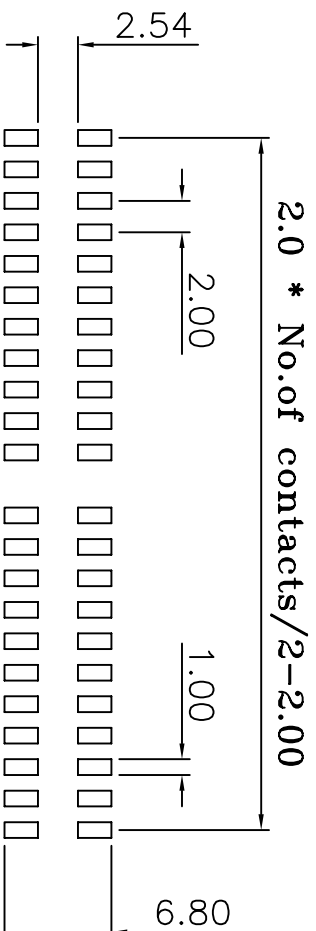
2.0 * No.of contacts/2-2.0



2.0 * No.of contacts/2



Recommended P.C. Board
SMD Layout



2.0 * No.of contacts/2-2.00

(RoHS Compliant)

P2 N 45 P - 2 XX D0 BK X 000 B

1. Standard: Nylon-6T

2. P=With Key 3.10mm

3. Per ROW: 03 to 40

4. Tgall Style:

DO=SMD No Peg Type

DI=SMD With Peg Type

5. Color:

BK=Black

5. Contact Plated:

T=Matte Tin over Nickel

W=Matte Tin over Nickel 150u"

Y=Bright Tin over Nickel

C=Gold Flash

F=Gold Flash,Matte Tin 100u"

A=Gold 3u"

B=Gold 3u",Matte Tin 100u"

D=Gold 5u"

E=Gold 5u",Matte Tin 100u"

G=Gold 10u"

J=Gold 10u",Matte Tin 100u"

L=Gold 15u"

M=Gold 15u",Matte Tin 100u"

U=Gold 30u"

V=Gold 30u",Matte Tin 100u"

6. Special Options

7. Packing:

B= Tube



CONN TOP
COMPONENT INC.

①:P2N45P-2XXD0BKX000-2008/01/10-C1

②:3-30-2007/04/03-C

PART NO

P2N45P-2XXD0BKX000B

.X
±0.3

.XXX
±0.100

DRAWING NO

P20045-00009

EDITION: C2

ITEM: P20045

DRAWN BY

GARY

2009/02/19

SCALE: 1:1

APPROVAL BY

UNIT: m.m

Current Rating:

2 Amps

Insulator Resistance:

5000 Megohms min

Contact Resistance:

20 m ohms max

Dielectric Withstanding:

500 V AC

Operating Temperature:

-40° ~ +105° C

Max Processing Temp:

230° C for 60 seconds

260° C for 10 seconds

Contact Material:

Phosphor Bronze

Insulator Material:

Polyester, UL 94V-0

Standard:Nylon-6T

Finish: Tin,Gold Plated

Standard:Gold Flash all over