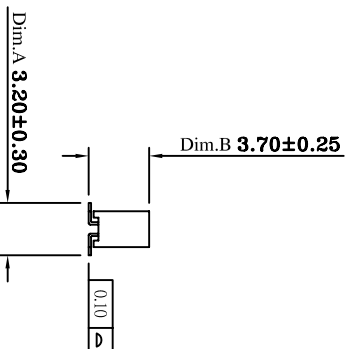
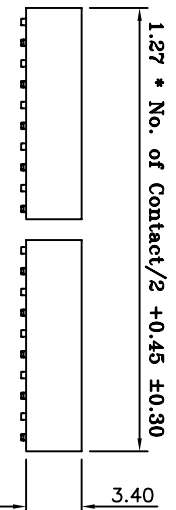
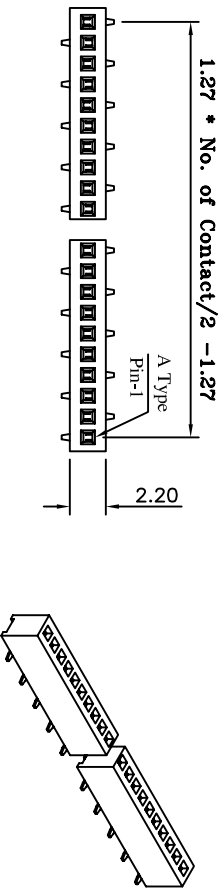
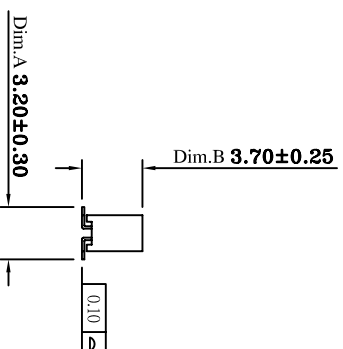
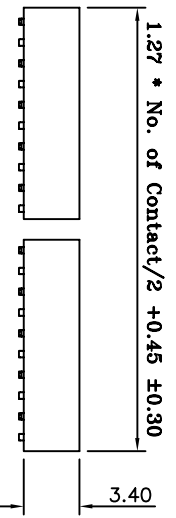
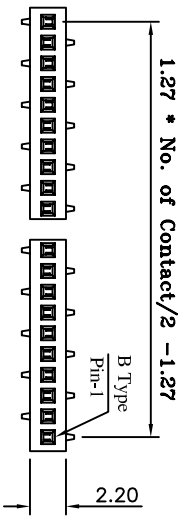


**A Type**



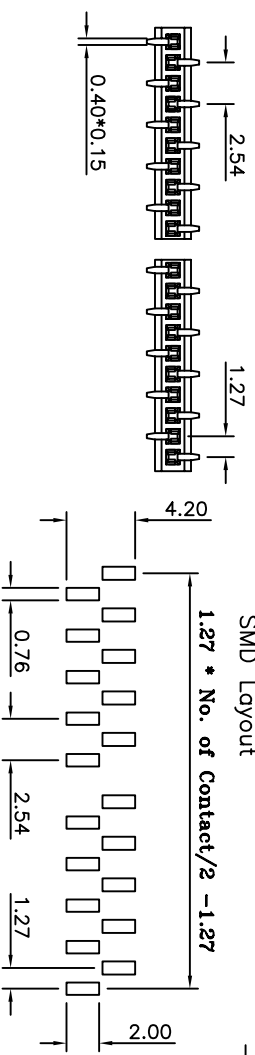
**B Type**



Current Rating: 1 Amps  
 Insulator Resistance: 5000 Megohms min  
 Dielectric Withstanding: 500 V AC  
 Contact Resistance: 20 Mm ohms max  
 Operating Temperature: -40° ~ +125° C  
 Max Processing Temp: 230° C for 60 seconds  
 Max Processing Temp: 260° C for 10 seconds  
 Contact Material: Copper Alloy  
 Insulator Material: Polyester, UL 94V-0 Standard: LCP

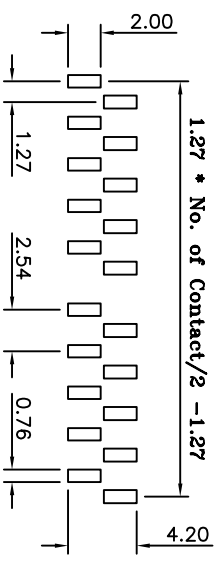
**A Type**

Recommended P.C. Board SMD Layout



**B Type**

Recommended P.C. Board SMD Layout



(RoHS Compliant)  
 (Halogen-Free)

P3 L 34 - 1 XX D0 BK X 000 B  
 1 2 3 4 5 6 7

- Standard: L=LCP
- Per ROW 02 to 50
- Taill Style: DA= S.M.D A Type DB= S.M.D B Type
- Color: BK=Black
- Contact Plated: C=Gold Flash A=Gold 3u"
- Special Options: D=Gold 5u" G=Gold 10u" L=Gold 15u" U=Gold 30u" B= Tube
- Packing: B= Tube



①: P3L34-1XXD0BKX000-2008/03/05-C	PART NO	P3L34-1XXD0BKX000B	.X	.XX	.XXX
	DRAWING NO	P127-00120	±0.3	±0.20	±0.100
	DRAWN BY	GARY		ITEM: P127	SCALE: 1:1
	EDITION:	2009/03/02		UNIT: m.m	

TEL: (02)86481727 FAX: (02)86482427