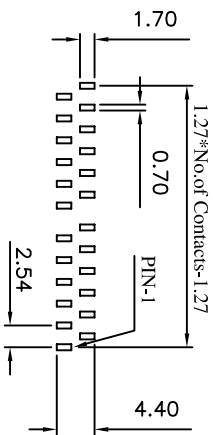
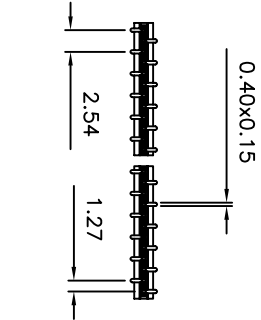
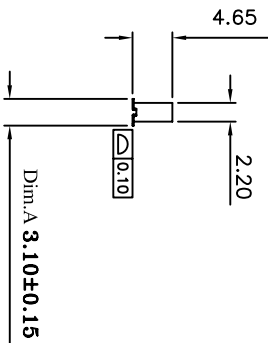
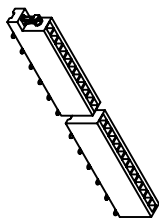
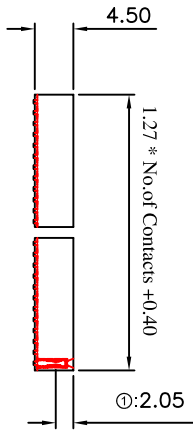
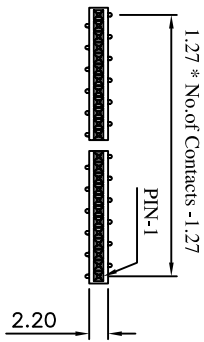
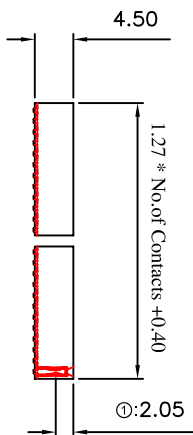
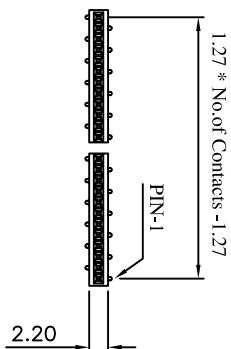


A TYPE



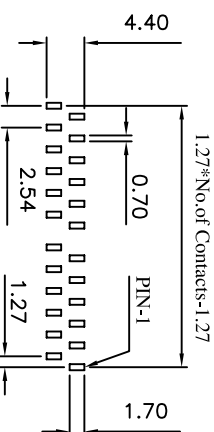
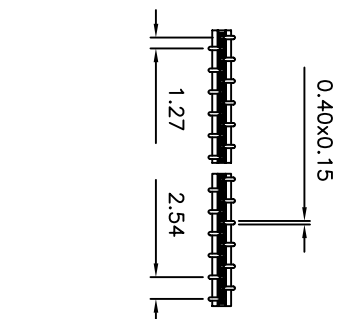
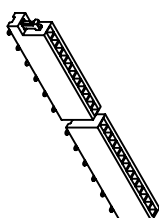
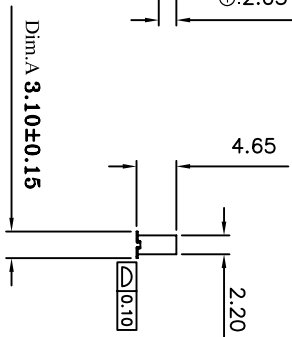
A TYPE
Recommended P.C. Board
SMD Layout

B TYPE



Current Rating: 1 Amps
 Insulator Resistance: 5000 Megohms min
 Contact Resistance: 20m ohms max.
 Dielectric Withstanding: 500 V AC
 Operating Temperature: -40° ~ +105° C
 Max Processing Temp: 230° C for 60 seconds
 Max Processing Temp: 260° C for 10 seconds
 Contact Material: Copper Alloy
 Insulator Material: Polyester, UL 94V-0
 Standard: LCP

Finish: Tin, Gold Plated
 Standard: Gold Flash all over



B TYPE
Recommended P.C. Board
SMD Layout

(RoHS Compliant)
(Halogen-Free)

P3 L 45 - 1 XX D0 BK X 001 B
 1 2 3 4 5 6 7

- Standard: L=LCP
- Per ROW 02 to 50
- Tail Style:
DA= S.M.D A Type
DB= S.M.D B Type
- Color:
BK=Black
- Contact Plated:
C=Gold Flash
A=Gold 3u"
- Special Options
D=Gold 5u"
G=Gold 10u"
L=Gold 15u"
U=Gold 30u"
- Packing:
B= Tube



CONN TOP COMPONENT INC.
 P3L45-1XXH0
 BOM 2: P3L43T-1534-04D
 3: P3L43T-1534-04D

PART NO

P3L45-1XXD0BKX001B

X ±0.3
 XX ±0.20
 XXX ±0.100

DRAWING NO

P127-00171

EDITION: C1
 ITEM: P127

DRAWN BY

GARY

SCALE: 1:1

APPROVAL BY

UNIT: m.m

Tel: (02)86481727 FAX: (02)86482427