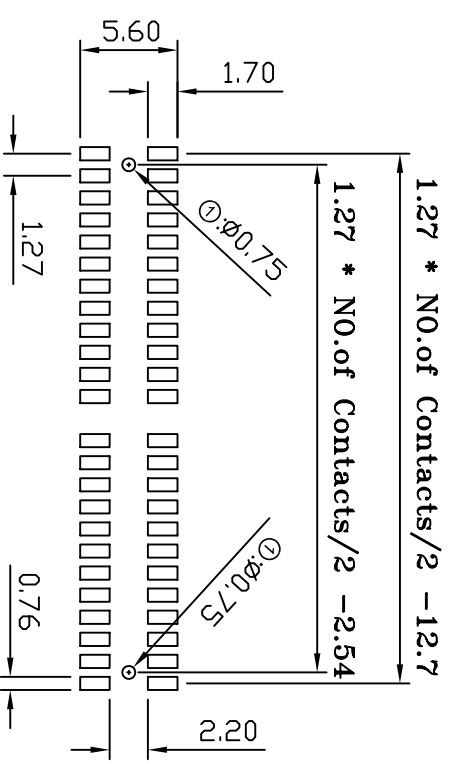
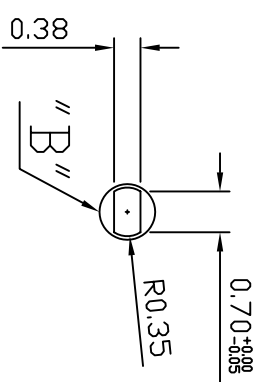
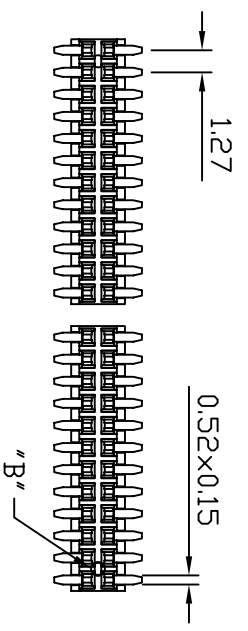


Recommended P.C. Board
SMD Layout

Current Rating: 1 Amps
 Insulator Resistance: 5000 Megohms min
 Contact Resistance: 20 m ohms max
 Dielectric Withstanding: 500 V AC
 Operating Temperature: -40° ~ +105° C
 Max Processing Temp: 230° C for 60 seconds
 Max Processing Temp: 260° C for 10 seconds
 Contact Material: Phosphor Bronze
 Insulator Material: Polyester; UL 94V-0
 Standard: Nylon-6T



(RoHS Compliant) P3 N 22 - 2 XX D1 BK X 000 X
 1 2 3 4 5 6 7

- Standard: 1. Standard: D=Gold 5u'
- Per Row: 2. Per Row: 03 to 50 5. Contact Plated: L=Gold 15u'
- Tail Style: 3. Tail Style: C=Gold Flash U=Gold 30u'
- Color: 4. Color: BK=Black G=Gold 10u'
- Packaging: 6. Special Options: B= Tube C= Tray
- Flash Type: A=Gold 3u'

CONN TOP COMPONENT INC.
 ①: P3N22-2XXXBKHI
 ②: P3N22T-1518-01D
 ③:

PART NO		P3N22-2XXD1BKX000X	
DRAWING NO	P127-00125	EDITION:	C1
DRAWN BY	GARY	SCALE:	1:1
APPROVAL BY		ITEM:	P127
		SCALE:	1:1
		UNIT:	m.m

TEL: (02)86481727 FAX: (02)86482427